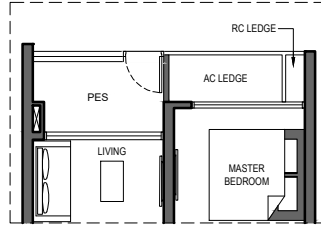


# 1 BEDROOM (LUXURY)

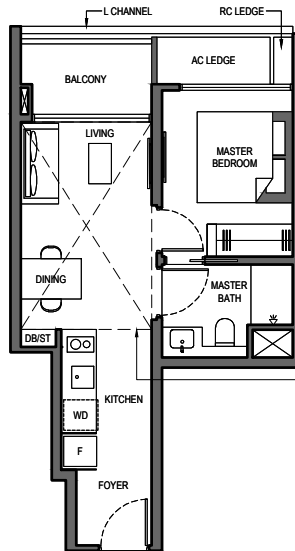
## TYPE 1BR 1-PES

42 SQM/ 452 SQFT  
 (INCLUSIVE OF 4 SQM PES & 2 SQM AC LEDGE)  
 BLOCK 6 #01-19 (mirrored)  
 BLOCK 8 #01-22  
 BLOCK 12 #01-39



## TYPE 1BR 1

42 SQM/ 452 SQFT  
 (INCLUSIVE OF 4 SQM BALCONY & 2 SQM AC LEDGE)  
 BLOCK 6 #02-19 to #17-19 (mirrored)  
 BLOCK 8 #02-22 to #17-22  
 BLOCK 12 #02-39 to #17-39



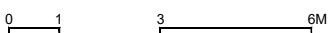
Dotted line denotes strata void complete with bulkhead at unit Type 1BR 1-H

## TYPE 1BR 1-H

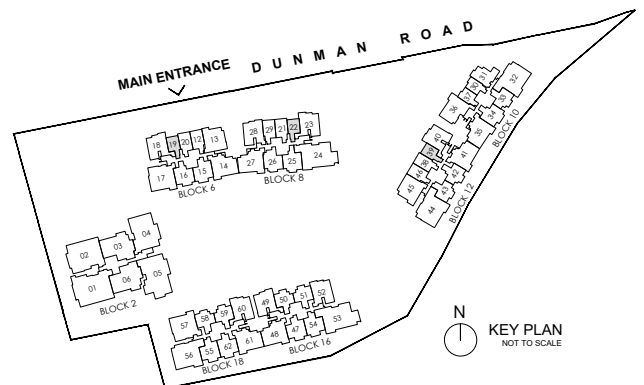
54 SQM/ 581 SQFT  
 (INCLUSIVE OF 4 SQM BALCONY,  
 2 SQM AC LEDGE & 12 SQM STRATA VOID)  
 BLOCK 6 #18-19 (mirrored)  
 BLOCK 8 #18-22  
 BLOCK 12 #18-39

### LEGEND:

F	FRIDGE	AC	AIR-CONDITIONER
WD	WASHER CUM DRYER	RC	REINFORCED CONCRETE (EXCLUDED FROM STRATA AREA)
DB	DISTRIBUTION BOARD	⊠	VOID SPACE (EXCLUDED FROM STRATA AREA)
ST	STORE		



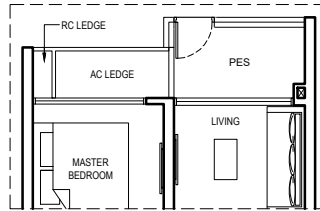
ALL PLANS ARE SUBJECT TO CHANGES BY THE RELEVANT AUTHORITIES.  
 MEASUREMENTS ARE APPROXIMATE ONLY AND SUBJECT TO FINAL SURVEY.  
 INFORMATION ACCURATE AT POINT OF PRINTING.  
 BP NO.: A1716-00003-2022-BP01 DATED 15 MAY 2023



# 1 BEDROOM (LUXURY)

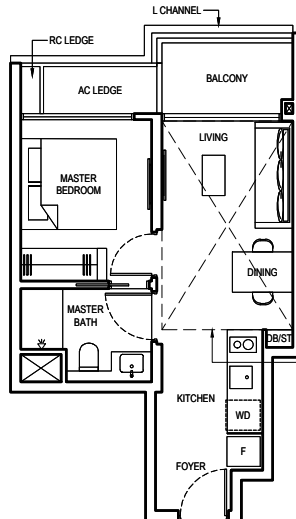
## TYPE 1BR 2-PES

42 SQM/ 452 SQFT  
 (INCLUSIVE OF 5 SQM PES & 2 SQM AC LEDGE)  
 BLOCK 10 #01-30  
 #01-37 (mirrored)



## TYPE 1BR 2

42 SQM/ 452 SQFT  
 (INCLUSIVE OF 5 SQM BALCONY & 2 SQM AC LEDGE)  
 BLOCK 10 #02-30 to #17-30  
 #02-37 to #17-37 (mirrored)



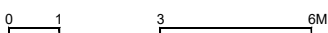
Dotted line denotes strata void complete with bulkhead at unit Type 1BR 2-H

## TYPE 1BR 2-H

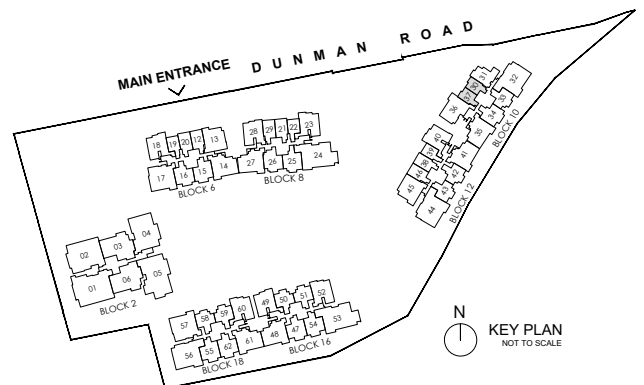
54 SQM/ 581 SQFT  
 (INCLUSIVE OF 5 SQM BALCONY,  
 2 SQM AC LEDGE & 12 SQM STRATA VOID)  
 BLOCK 10 #18-30  
 #18-37 (mirrored)

### LEGEND:

- |    |                    |    |   |
|----|--------------------|----|---|
| F  | FRIDGE             | AC | AIR-CONDITIONER                                 |
| WD | WASHER CUM DRYER   | RC | REINFORCED CONCRETE (EXCLUDED FROM STRATA AREA) |
| DB | DISTRIBUTION BOARD | ⊠  | VOID SPACE (EXCLUDED FROM STRATA AREA)          |
| ST | STORE              |    |   |



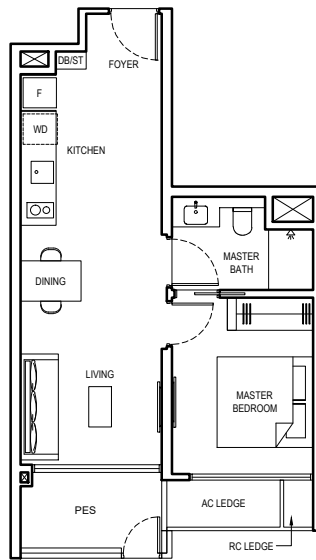
ALL PLANS ARE SUBJECT TO CHANGES BY THE RELEVANT AUTHORITIES.  
 MEASUREMENTS ARE APPROXIMATE ONLY AND SUBJECT TO FINAL SURVEY.  
 INFORMATION ACCURATE AT POINT OF PRINTING.  
 BP NO.: A1716-00003-2022-BP01 DATED 15 MAY 2023



# 1 BEDROOM (LUXURY)

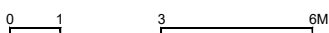
## TYPE 1BR 3-PES

51 SQM/ 549 SQFT  
 (INCLUSIVE OF 5 SQM PES & 2 SQM AC LEDGE)  
 BLOCK 10 #01-33  
 BLOCK 12 #01-43 (mirrored)

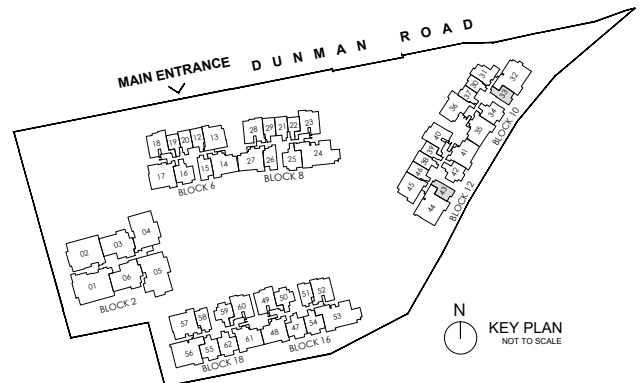


### LEGEND:

F	FRIDGE	AC	AIR-CONDITIONER
WD	WASHER CUM DRYER	RC	REINFORCED CONCRETE (EXCLUDED FROM STRATA AREA)
DB	DISTRIBUTION BOARD	⊠	VOID SPACE (EXCLUDED FROM STRATA AREA)
ST	STORE		



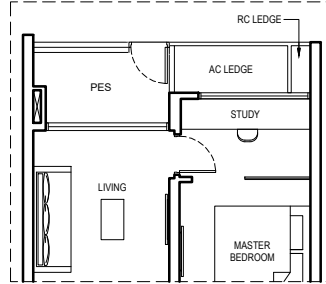
ALL PLANS ARE SUBJECT TO CHANGES BY THE RELEVANT AUTHORITIES.  
 MEASUREMENTS ARE APPROXIMATE ONLY AND SUBJECT TO FINAL SURVEY.  
 INFORMATION ACCURATE AT POINT OF PRINTING.  
 BP NO.: A1716-00003-2022-BP01 DATED 15 MAY 2023



# 1 BEDROOM + STUDY (LUXURY)

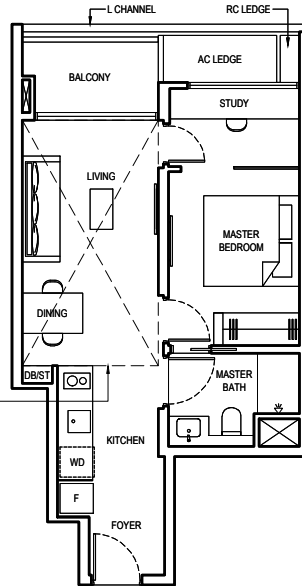
## TYPE 1BR S1-PES

51 SQM/ 549 SQFT  
 (INCLUSIVE OF 5 SQM PES & 2 SQM AC LEDGE)  
 BLOCK 6 #01-20  
 BLOCK 8 #01-29  
 BLOCK 12 #01-46



## TYPE 1BR S1

51 SQM/ 549 SQFT  
 (INCLUSIVE OF 5 SQM BALCONY & 2 SQM AC LEDGE)  
 BLOCK 6 #02-20 to #17-20  
 BLOCK 8 #02-29 to #17-29  
 BLOCK 12 #02-46 to #17-46



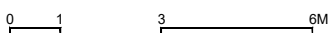
Dotted line denotes strata void complete with bulkhead at unit Type 1BR S1-H

## TYPE 1BR S1-H

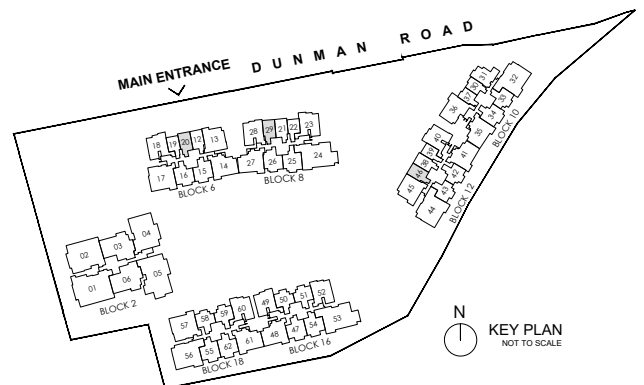
66 SQM/ 710 SQFT  
 (INCLUSIVE OF 5 SQM BALCONY,  
 2 SQM AC LEDGE & 15 SQM STRATA VOID)  
 BLOCK 6 #18-20  
 BLOCK 8 #18-29  
 BLOCK 12 #18-46

### LEGEND:

F	FRIDGE	AC	AIR-CONDITIONER
WD	WASHER CUM DRYER	RC	REINFORCED CONCRETE (EXCLUDED FROM STRATA AREA)
DB	DISTRIBUTION BOARD	⊠	VOID SPACE (EXCLUDED FROM STRATA AREA)
ST	STORE		



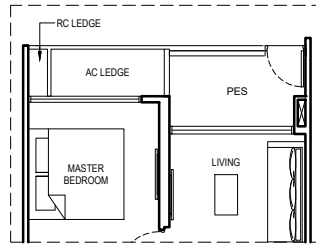
ALL PLANS ARE SUBJECT TO CHANGES BY THE RELEVANT AUTHORITIES.  
 MEASUREMENTS ARE APPROXIMATE ONLY AND SUBJECT TO FINAL SURVEY.  
 INFORMATION ACCURATE AT POINT OF PRINTING.  
 BP NO.: A1716-00003-2022-BP01 DATED 15 MAY 2023



# 1 BEDROOM + STUDY (LUXURY)

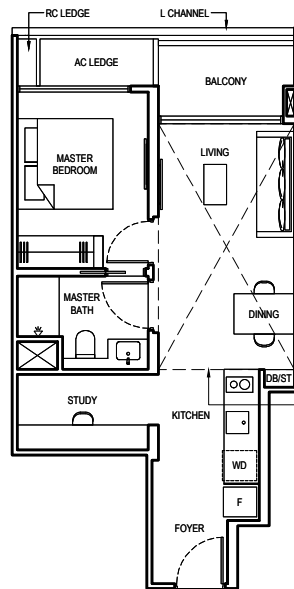
## TYPE 1BR S2-PES

51 SQM/ 549 SQFT  
 (INCLUSIVE OF 5 SQM PES & 2 SQM AC LEDGE)  
 BLOCK 6 #01-12  
 BLOCK 8 #01-21  
 BLOCK 12 #01-38



## TYPE 1BR S2

51 SQM/ 549 SQFT  
 (INCLUSIVE OF 5 SQM BALCONY & 2 SQM AC LEDGE)  
 BLOCK 6 #02-12 to #17-12  
 BLOCK 8 #02-21 to #17-21  
 BLOCK 12 #02-38 to #17-38



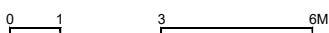
Dotted line denotes strata void complete with bulkhead at unit Type 1BR S2-H

## TYPE 1BR S2-H

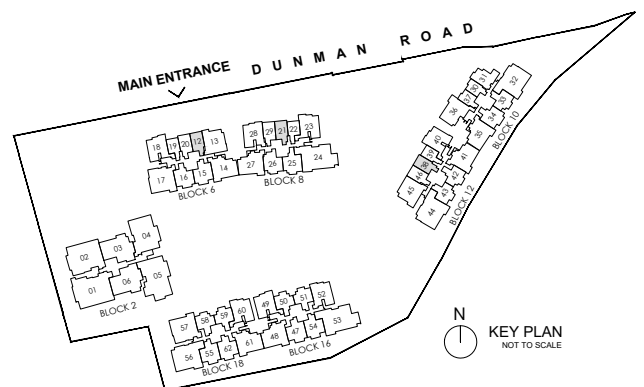
66 SQM/ 710 SQFT  
 (INCLUSIVE OF 5 SQM BALCONY,  
 2 SQM AC LEDGE & 15 SQM STRATA VOID)  
 BLOCK 6 #18-12  
 BLOCK 8 #18-21  
 BLOCK 12 #18-38

### LEGEND:

F	FRIDGE	AC	AIR-CONDITIONER
WD	WASHER CUM DRYER	RC	REINFORCED CONCRETE (EXCLUDED FROM STRATA AREA)
DB	DISTRIBUTION BOARD	⊠	VOID SPACE (EXCLUDED FROM STRATA AREA)
ST	STORE		



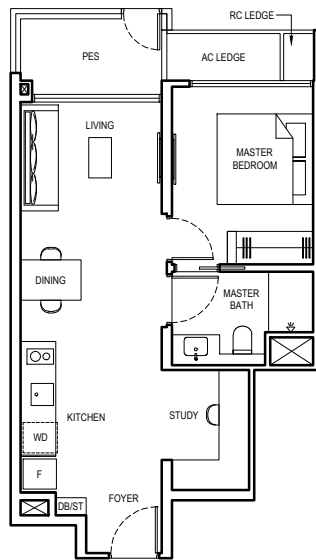
ALL PLANS ARE SUBJECT TO CHANGES BY THE RELEVANT AUTHORITIES.  
 MEASUREMENTS ARE APPROXIMATE ONLY AND SUBJECT TO FINAL SURVEY.  
 INFORMATION ACCURATE AT POINT OF PRINTING.  
 BP NO.: A1716-00003-2022-BP01 DATED 15 MAY 2023



# 1 BEDROOM + STUDY (LUXURY)

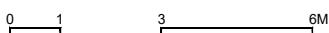
## TYPE 1BR S3-PES

55 SQM / 592 SQFT  
 (INCLUSIVE OF 5 SQM PES & 2 SQM AC LEDGE)  
 BLOCK 16 #01-51  
 BLOCK 18 #01-58 (mirrored)

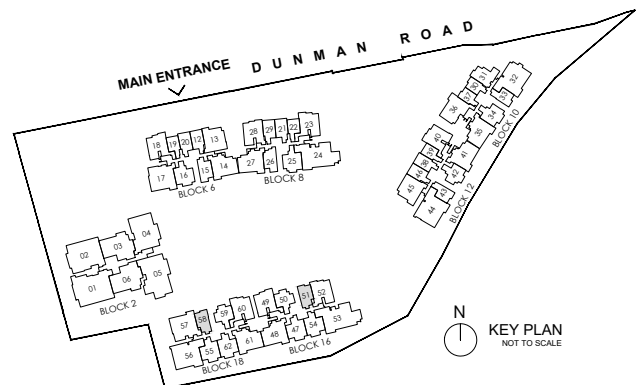


### LEGEND:

F	FRIDGE	AC	AIR-CONDITIONER
WD	WASHER CUM DRYER	RC	REINFORCED CONCRETE (EXCLUDED FROM STRATA AREA)
DB	DISTRIBUTION BOARD	⊠	VOID SPACE (EXCLUDED FROM STRATA AREA)
ST	STORE		



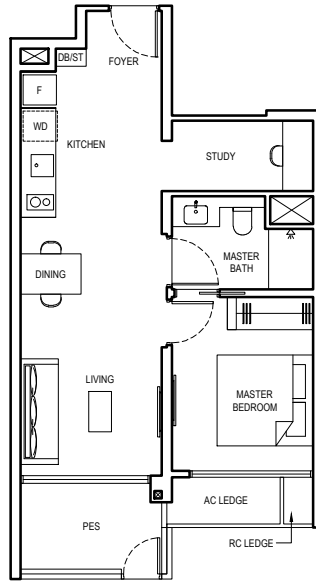
ALL PLANS ARE SUBJECT TO CHANGES BY THE RELEVANT AUTHORITIES.  
 MEASUREMENTS ARE APPROXIMATE ONLY AND SUBJECT TO FINAL SURVEY.  
 INFORMATION ACCURATE AT POINT OF PRINTING.  
 BP NO.: A1716-00003-2022-BP01 DATED 15 MAY 2023



# 1 BEDROOM + STUDY (LUXURY)

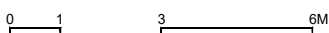
## TYPE 1BR S4-PES

56 SQM/ 603 SQFT  
 (INCLUSIVE OF 6 SQM PES & 2 SQM AC LEDGE)  
 BLOCK 6 #01-15

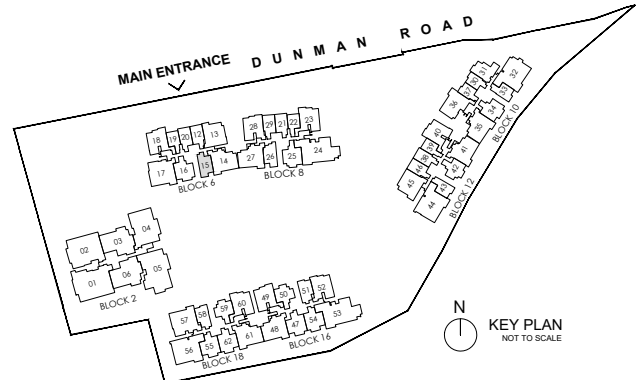


### LEGEND:

F	FRIDGE	AC	AIR-CONDITIONER
WD	WASHER CUM DRYER	RC	REINFORCED CONCRETE (EXCLUDED FROM STRATA AREA)
DB	DISTRIBUTION BOARD	⊠	VOID SPACE (EXCLUDED FROM STRATA AREA)
ST	STORE		



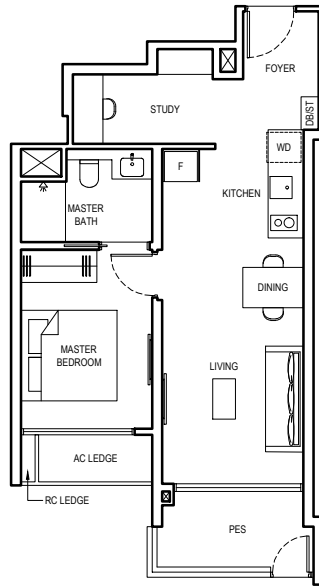
ALL PLANS ARE SUBJECT TO CHANGES BY THE RELEVANT AUTHORITIES.  
 MEASUREMENTS ARE APPROXIMATE ONLY AND SUBJECT TO FINAL SURVEY.  
 INFORMATION ACCURATE AT POINT OF PRINTING.  
 BP NO.: A1716-00003-2022-BP01 DATED 15 MAY 2023



# 1 BEDROOM + STUDY (LUXURY)

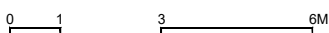
## TYPE 1BR S5-PES

55 SQM / 592 SQFT  
 (INCLUSIVE OF 6 SQM PES & 3 SQM AC LEDGE)  
 BLOCK 8 #01-26

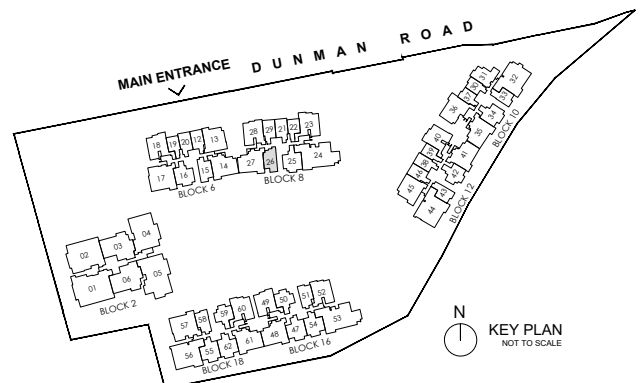


### LEGEND:

- |    |                    |    |   |
|----|--------------------|----|---|
| F  | FRIDGE             | AC | AIR-CONDITIONER                                 |
| WD | WASHER CUM DRYER   | RC | REINFORCED CONCRETE (EXCLUDED FROM STRATA AREA) |
| DB | DISTRIBUTION BOARD | ⊠  | VOID SPACE (EXCLUDED FROM STRATA AREA)          |
| ST | STORE              |    |   |



ALL PLANS ARE SUBJECT TO CHANGES BY THE RELEVANT AUTHORITIES.  
 MEASUREMENTS ARE APPROXIMATE ONLY AND SUBJECT TO FINAL SURVEY.  
 INFORMATION ACCURATE AT POINT OF PRINTING.  
 BP NO.: A1716-00003-2022-BP01 DATED 15 MAY 2023

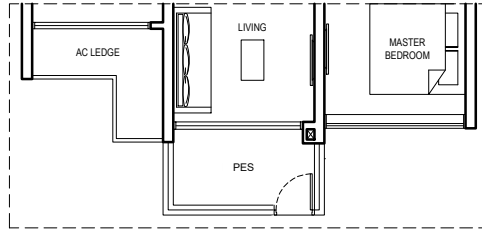




# 2 BEDROOM (LUXURY)

## TYPE 2BR 1-PES

62 SQM/ 667 SQFT  
 (INCLUSIVE OF 5 SQM PES & 4 SQM AC LEDGE)  
 BLOCK 12 #01-42  
 BLOCK 16 #01-50  
 BLOCK 18 #01-59 (mirrored)

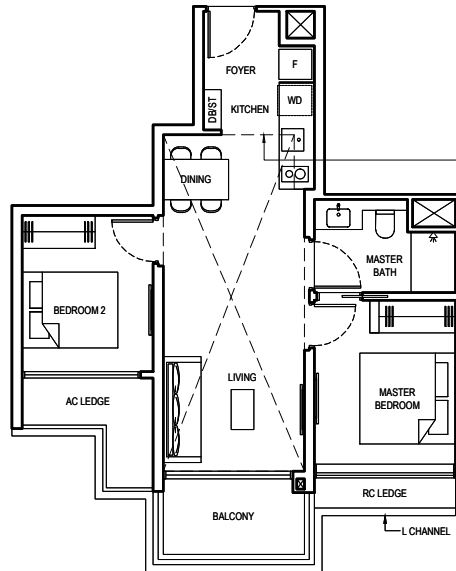


## TYPE 2BR 1

62 SQM/ 667 SQFT  
 (INCLUSIVE OF 5 SQM BALCONY & 4 SQM AC LEDGE)  
 BLOCK 12 #02-42 to #17-42  
 BLOCK 16 #02-50 to #17-50  
 BLOCK 18 #02-59 to #17-59 (mirrored)

## TYPE 2BR 1-H

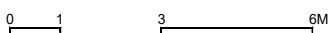
83 SQM/ 893 SQFT  
 (INCLUSIVE OF 5 SQM BALCONY,  
 4 SQM AC LEDGE & 21 SQM STRATA VOID)  
 BLOCK 16 #18-50  
 BLOCK 18 #18-59 (mirrored)



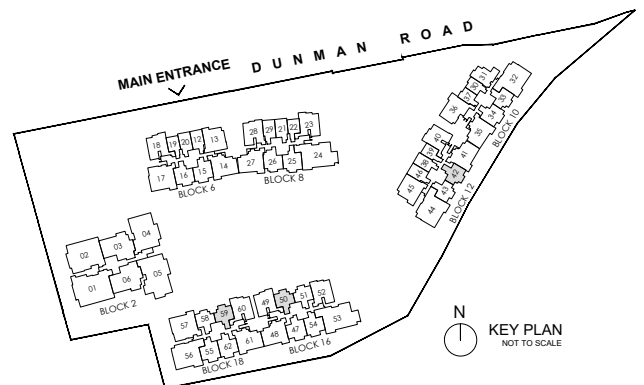
Dotted line denotes strata void complete with bulkhead at unit Type 2BR 1-H

### LEGEND:

- |    |                    |    |   |
|----|--------------------|----|---|
| F  | FRIDGE             | AC | AIR-CONDITIONER                                 |
| WD | WASHER CUM DRYER   | RC | REINFORCED CONCRETE (EXCLUDED FROM STRATA AREA) |
| DB | DISTRIBUTION BOARD | ⊠  | VOID SPACE (EXCLUDED FROM STRATA AREA)          |
| ST | STORE              |    |   |



ALL PLANS ARE SUBJECT TO CHANGES BY THE RELEVANT AUTHORITIES.  
 MEASUREMENTS ARE APPROXIMATE ONLY AND SUBJECT TO FINAL SURVEY.  
 INFORMATION ACCURATE AT POINT OF PRINTING.  
 BP NO.: A1716-00003-2022-BP01 DATED 15 MAY 2023



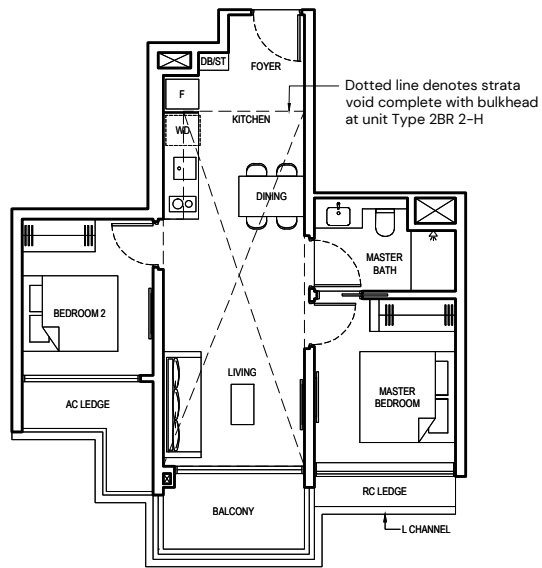
# 2 BEDROOM (LUXURY)

## TYPE 2BR 2

62 SQM/ 667 SQFT  
 (INCLUSIVE OF 5 SQM BALCONY & 4 SQM AC LEDGE)  
 BLOCK 10 #02-33 to #17-33  
 BLOCK 12 #02-43 to #17-43 (mirrored)  
 BLOCK 16 #02-51 to #17-51 (mirrored)  
 BLOCK 18 #02-58 to #17-58

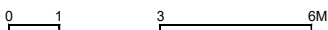
## TYPE 2BR 2-H

83 SQM/ 893 SQFT  
 (INCLUSIVE OF 5 SQM BALCONY,  
 4 SQM AC LEDGE & 21 SQM STRATA VOID)  
 BLOCK 16 #18-51 (mirrored)  
 BLOCK 18 #18-58

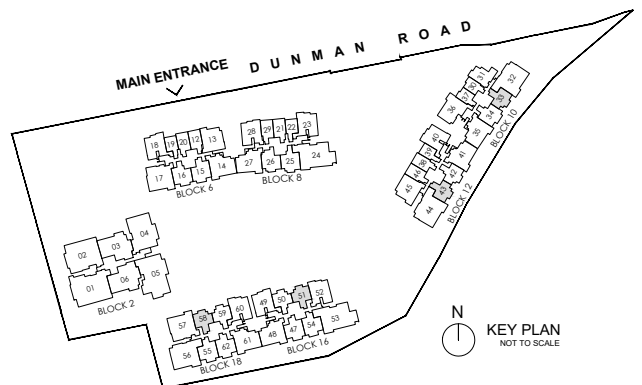


### LEGEND:

F	FRIDGE	AC	AIR-CONDITIONER
WD	WASHER CUM DRYER	RC	REINFORCED CONCRETE (EXCLUDED FROM STRATA AREA)
DB	DISTRIBUTION BOARD	⊠	VOID SPACE (EXCLUDED FROM STRATA AREA)
ST	STORE		



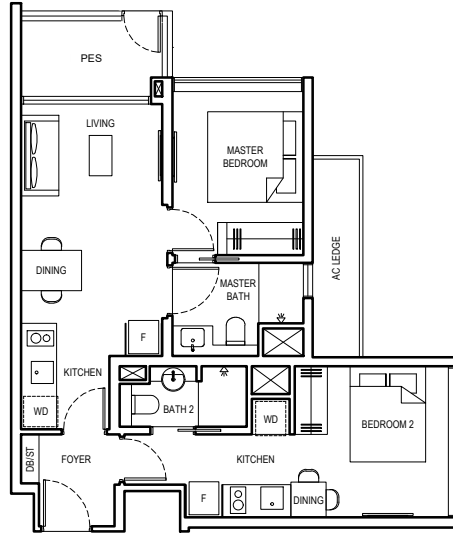
ALL PLANS ARE SUBJECT TO CHANGES BY THE RELEVANT AUTHORITIES.  
 MEASUREMENTS ARE APPROXIMATE ONLY AND SUBJECT TO FINAL SURVEY.  
 INFORMATION ACCURATE AT POINT OF PRINTING.  
 BP NO.: A1716-00003-2022-BP01 DATED 15 MAY 2023



# 2 BEDROOM DUAL KEY (LUXURY)

## TYPE 2BR DK1-PES

67 SQM/ 721 SQFT  
(INCLUSIVE OF 5 SQM PES & 4 SQM AC LEDGE)  
BLOCK 10 #01-31



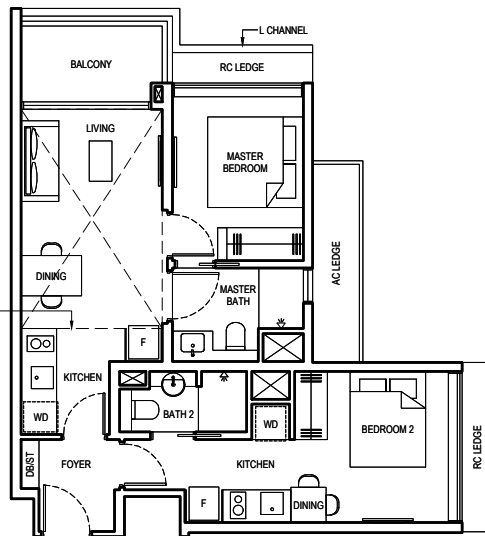
## TYPE 2BR DK1

67 SQM/ 721 SQFT  
(INCLUSIVE OF 5 SQM BALCONY & 4 SQM AC LEDGE)  
BLOCK 10 #02-31 to #17-31

## TYPE 2BR DK1-H

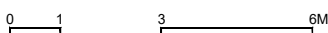
81 SQM/ 872 SQFT  
(INCLUSIVE OF 5 SQM BALCONY,  
4 SQM AC LEDGE & 14 SQM STRATA VOID)  
BLOCK 10 #18-31

Dotted line denotes strata void complete with bulkhead at unit Type 2BR DK1-H

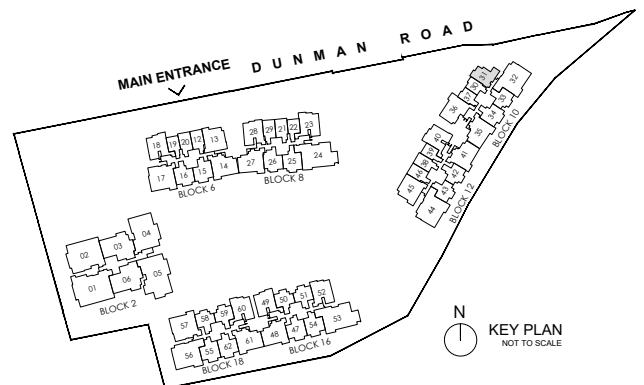


### LEGEND:

- |    |                    |    |   |
|----|--------------------|----|---|
| F  | FRIDGE             | AC | AIR-CONDITIONER                                 |
| WD | WASHER CUM DRYER   | RC | REINFORCED CONCRETE (EXCLUDED FROM STRATA AREA) |
| DB | DISTRIBUTION BOARD | ⊠  | VOID SPACE (EXCLUDED FROM STRATA AREA)          |
| ST | STORE              |    |   |



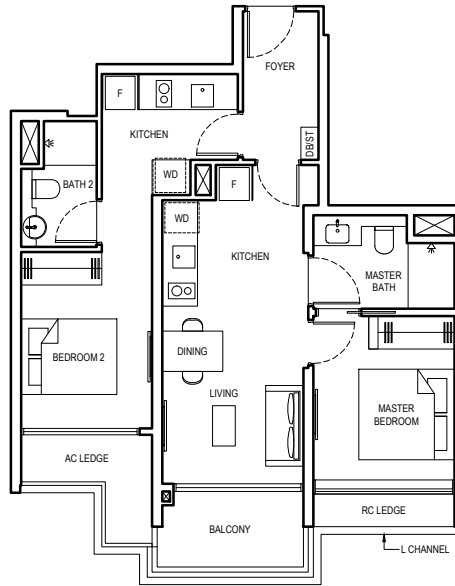
ALL PLANS ARE SUBJECT TO CHANGES BY THE RELEVANT AUTHORITIES.  
MEASUREMENTS ARE APPROXIMATE ONLY AND SUBJECT TO FINAL SURVEY.  
INFORMATION ACCURATE AT POINT OF PRINTING.  
BP NO.: A1716-00003-2022-BP01 DATED 15 MAY 2023



# 2 BEDROOM DUAL KEY (LUXURY)

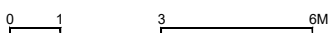
## TYPE 2BR DK2

72 SQM/ 775 SQFT  
 (INCLUSIVE OF 5 SQM BALCONY & 4 SQM AC LEDGE)  
 BLOCK 8 #02-26 to #17-26

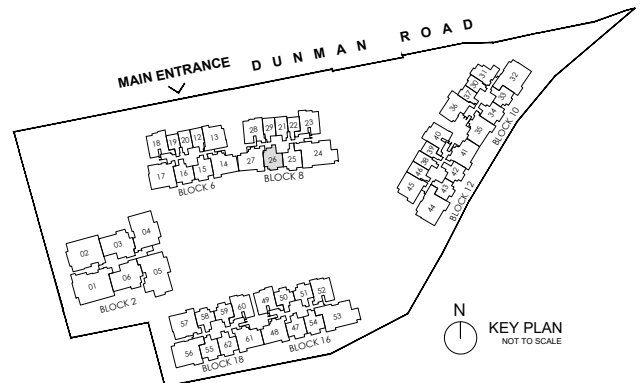


### LEGEND:

F	FRIDGE	AC	AIR-CONDITIONER
WD	WASHER CUM DRYER	RC	REINFORCED CONCRETE (EXCLUDED FROM STRATA AREA)
DB	DISTRIBUTION BOARD	⊠	VOID SPACE (EXCLUDED FROM STRATA AREA)
ST	STORE		



ALL PLANS ARE SUBJECT TO CHANGES BY THE RELEVANT AUTHORITIES.  
 MEASUREMENTS ARE APPROXIMATE ONLY AND SUBJECT TO FINAL SURVEY.  
 INFORMATION ACCURATE AT POINT OF PRINTING.  
 BP NO.: A1716-00003-2022-BP01 DATED 15 MAY 2023



N  
 KEY PLAN  
 NOT TO SCALE

# 2 BEDROOM + STUDY (LUXURY)

## TYPE 2BR S1-PES

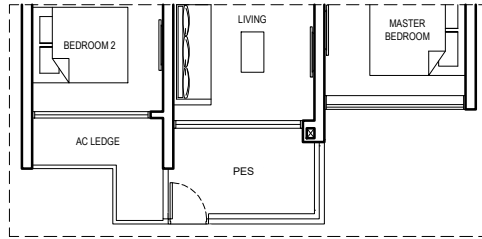
72 SQM/ 775 SQFT  
(INCLUSIVE OF 6 SQM PES & 4 SQM AC LEDGE)

BLOCK 16 #01-47 (mirrored)

#01-54

BLOCK 18 #01-55 (mirrored)

#01-62



## TYPE 2BR S1

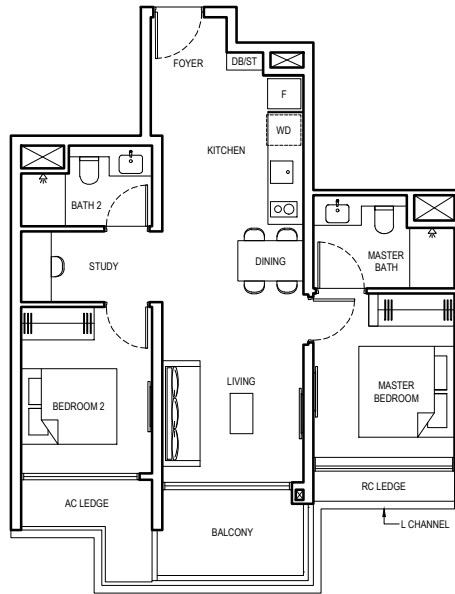
72 SQM/ 775 SQFT  
(INCLUSIVE OF 6 SQM BALCONY & 4 SQM AC LEDGE)

BLOCK 16 #02-47 to #17-47 (mirrored)

#02-54 to #17-54

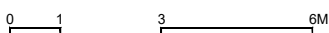
BLOCK 18 #02-55 to #17-55 (mirrored)

#02-62 to #17-62

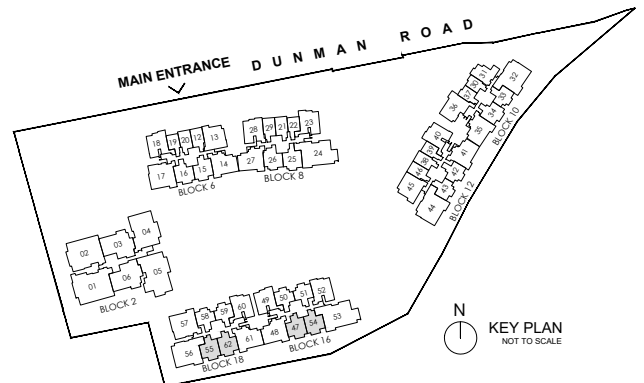


### LEGEND:

F	FRIDGE	AC	AIR-CONDITIONER
WD	WASHER CUM DRYER	RC	REINFORCED CONCRETE (EXCLUDED FROM STRATA AREA)
DB	DISTRIBUTION BOARD	⊠	VOID SPACE (EXCLUDED FROM STRATA AREA)
ST	STORE		



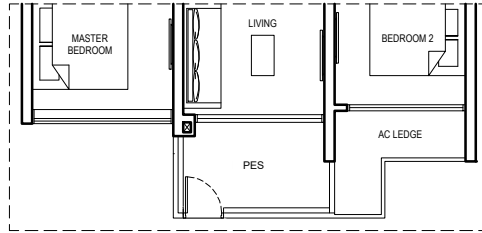
ALL PLANS ARE SUBJECT TO CHANGES BY THE RELEVANT AUTHORITIES.  
MEASUREMENTS ARE APPROXIMATE ONLY AND SUBJECT TO FINAL SURVEY.  
INFORMATION ACCURATE AT POINT OF PRINTING.  
BP NO.: A1716-00003-2022-BP01 DATED 15 MAY 2023



# 2 BEDROOM + STUDY (LUXURY)

## TYPE 2BR S2-PES

72 SQM/ 775 SQFT  
 (INCLUSIVE OF 6 SQM PES & 4 SQM AC LEDGE)  
 BLOCK 6 #01-16  
 BLOCK 10 #01-34

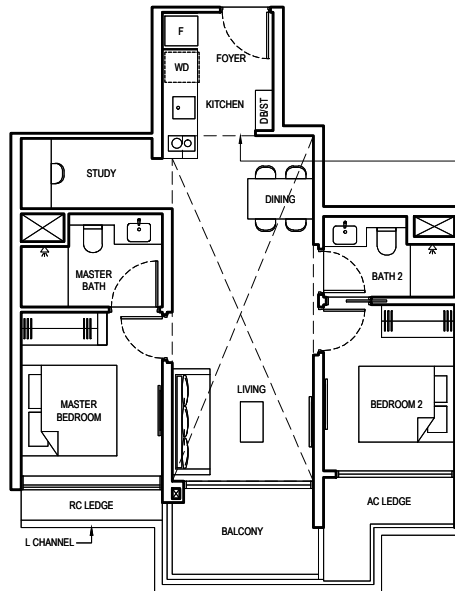


## TYPE 2BR S2

72 SQM/ 775 SQFT  
 (INCLUSIVE OF 6 SQM BALCONY & 4 SQM AC LEDGE)  
 BLOCK 6 #02-16 to #17-16  
 BLOCK 10 #02-34 to #17-34

## TYPE 2BR S2-H

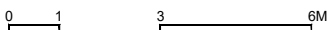
93 SQM/ 1001 SQFT  
 (INCLUSIVE OF 6 SQM BALCONY,  
 4 SQM AC LEDGE & 21 SQM STRATA VOID)  
 BLOCK 6 #18-16



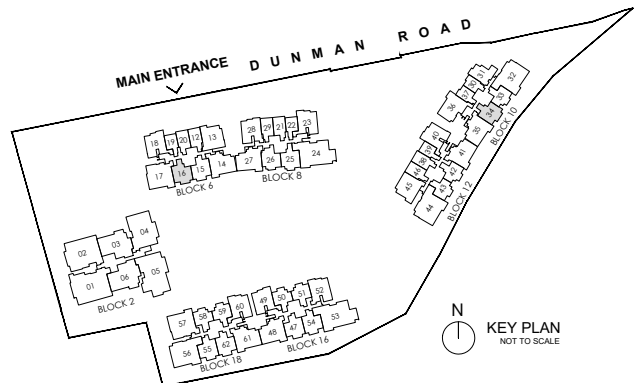
Dotted line denotes strata void complete with bulkhead at unit Type 2BR S2-H

### LEGEND:

F	FRIDGE	AC	AIR-CONDITIONER
WD	WASHER CUM DRYER	RC	REINFORCED CONCRETE (EXCLUDED FROM STRATA AREA)
DB	DISTRIBUTION BOARD	⊠	VOID SPACE (EXCLUDED FROM STRATA AREA)
ST	STORE		



ALL PLANS ARE SUBJECT TO CHANGES BY THE RELEVANT AUTHORITIES.  
 MEASUREMENTS ARE APPROXIMATE ONLY AND SUBJECT TO FINAL SURVEY.  
 INFORMATION ACCURATE AT POINT OF PRINTING.  
 BP NO.: A1716-00003-2022-BP01 DATED 15 MAY 2023



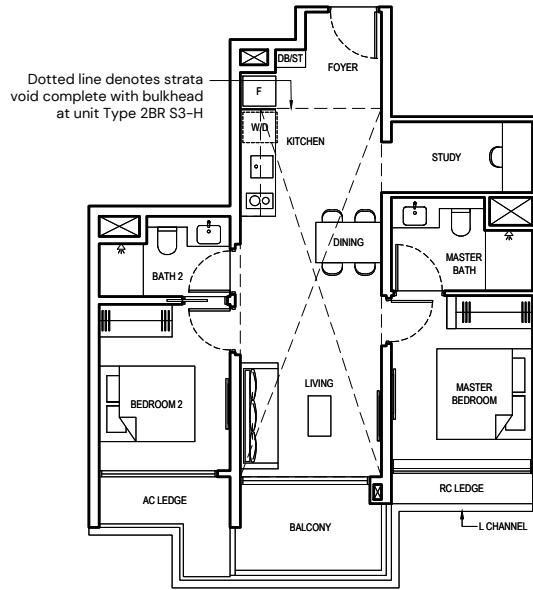
# 2 BEDROOM + STUDY (LUXURY)

## TYPE 2BR S3

72 SQM/ 775 SQFT  
 (INCLUSIVE OF 6 SQM BALCONY & 4 SQM AC LEDGE)  
 BLOCK 6 #02-15 to #17-15

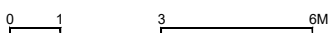
## TYPE 2BR S3-H

94 SQM/ 1012 SQFT  
 (INCLUSIVE OF 6 SQM BALCONY,  
 4 SQM AC LEDGE & 22 SQM STRATA VOID)  
 BLOCK 6 #18-15

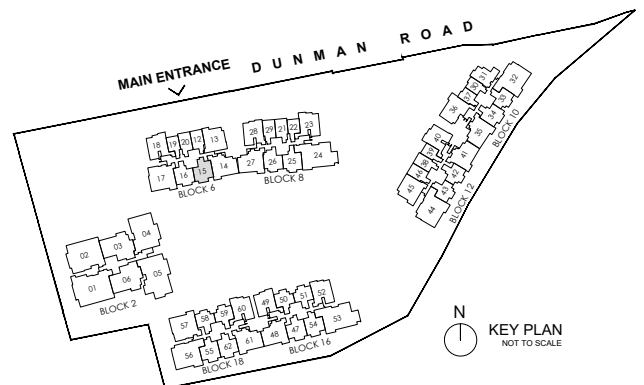


### LEGEND:

- |    |                    |    |   |
|----|--------------------|----|---|
| F  | FRIDGE             | AC | AIR-CONDITIONER                                 |
| WD | WASHER CUM DRYER   | RC | REINFORCED CONCRETE (EXCLUDED FROM STRATA AREA) |
| DB | DISTRIBUTION BOARD | ⊠  | VOID SPACE (EXCLUDED FROM STRATA AREA)          |
| ST | STORE              |    |   |



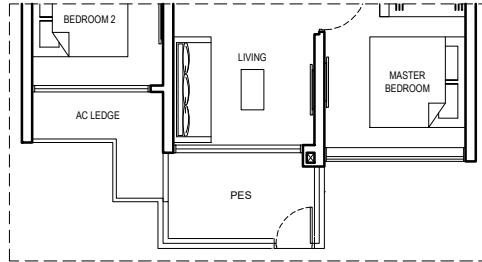
ALL PLANS ARE SUBJECT TO CHANGES BY THE RELEVANT AUTHORITIES.  
 MEASUREMENTS ARE APPROXIMATE ONLY AND SUBJECT TO FINAL SURVEY.  
 INFORMATION ACCURATE AT POINT OF PRINTING.  
 BP NO.: A1716-00003-2022-BP01 DATED 15 MAY 2023



# 2 BEDROOM + STUDY (LUXURY)

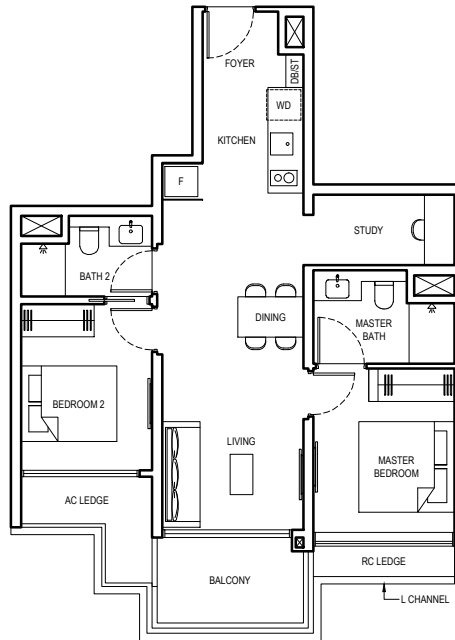
## TYPE 2BR S4-PES

74 SQM/ 797 SQFT  
 (INCLUSIVE OF 6 SQM PES & 4 SQM AC LEDGE)  
 BLOCK 8 #01-25



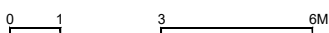
## TYPE 2BR S4

74 SQM/ 797 SQFT  
 (INCLUSIVE OF 6 SQM BALCONY & 4 SQM AC LEDGE)  
 BLOCK 8 #02-25 to #17-25

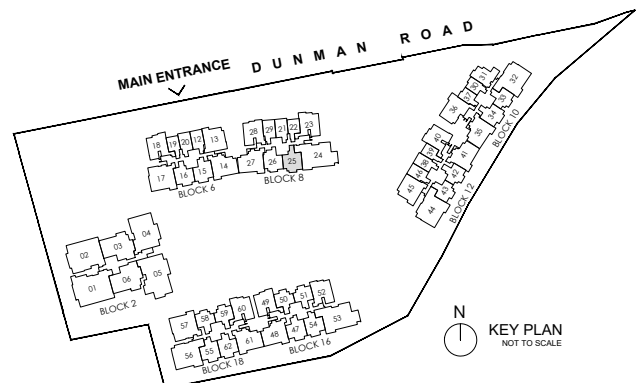


### LEGEND:

F	FRIDGE	AC	AIR-CONDITIONER
WD	WASHER CUM DRYER	RC	REINFORCED CONCRETE (EXCLUDED FROM STRATA AREA)
DB	DISTRIBUTION BOARD	⊠	VOID SPACE (EXCLUDED FROM STRATA AREA)
ST	STORE		



ALL PLANS ARE SUBJECT TO CHANGES BY THE RELEVANT AUTHORITIES.  
 MEASUREMENTS ARE APPROXIMATE ONLY AND SUBJECT TO FINAL SURVEY.  
 INFORMATION ACCURATE AT POINT OF PRINTING.  
 BP NO.: A1716-00003-2022-BP01 DATED 15 MAY 2023



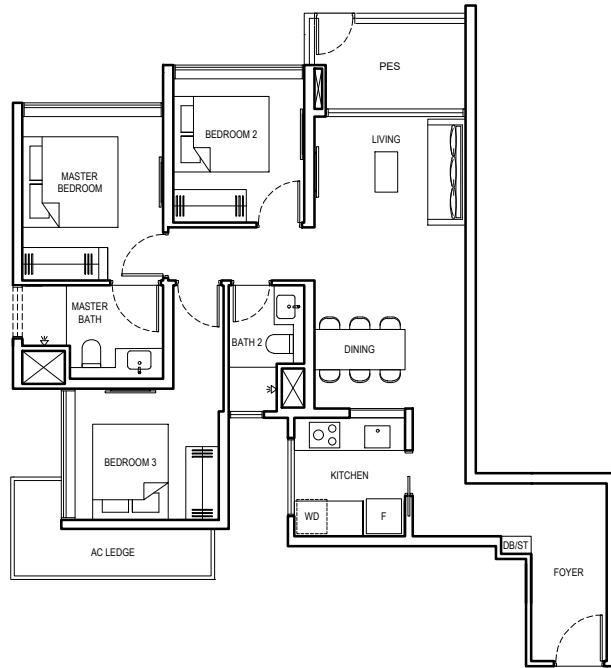
N  
 KEY PLAN  
 NOT TO SCALE



# 3 BEDROOM (LUXURY)

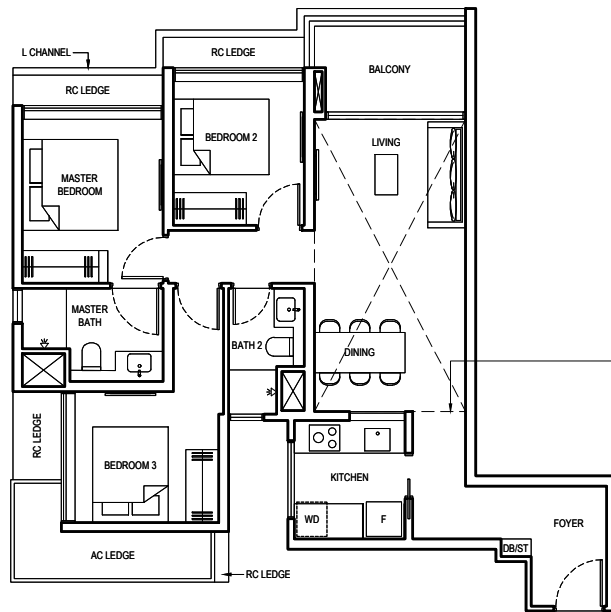
## TYPE 3BR 1-PES

91 SQM/ 980 SQFT  
 (INCLUSIVE OF 6 SQM PES & 5 SQM AC LEDGE)  
 BLOCK 6 #01-18  
 BLOCK 8 #01-23 (mirrored)  
 BLOCK 12 #01-40 (mirrored)  
 BLOCK 16 #01-49  
 BLOCK 18 #01-60 (mirrored)



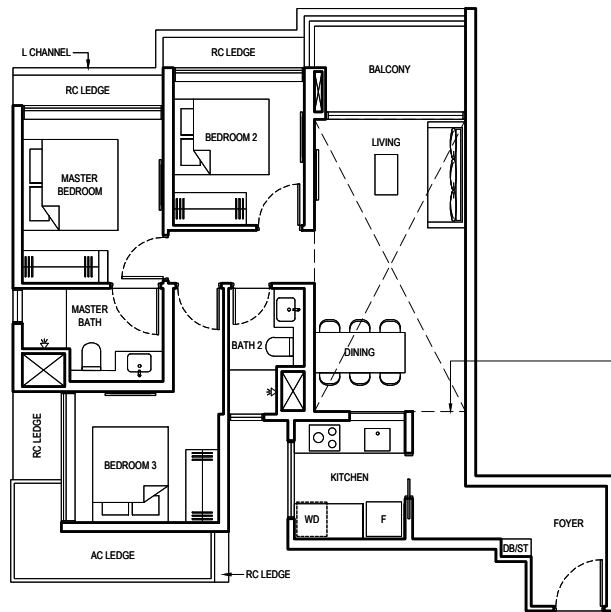
## TYPE 3BR 1

89 SQM/ 958 SQFT  
 (INCLUSIVE OF 6 SQM BALCONY & 5 SQM AC LEDGE)  
 BLOCK 6 #02-18 to #17-18  
 BLOCK 8 #02-23 to #17-23 (mirrored)  
 BLOCK 12 #02-40 to #17-40 (mirrored)  
 BLOCK 16 #02-49 to #17-49  
 BLOCK 18 #02-60 to #17-60 (mirrored)



## TYPE 3BR 1-H

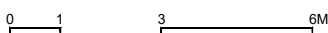
108 SQM/ 1163 SQFT  
 (INCLUSIVE OF 6 SQM BALCONY,  
 5 SQM AC LEDGE & 19 SQM STRATA VOID)  
 BLOCK 6 #18-18  
 BLOCK 8 #18-23 (mirrored)  
 BLOCK 12 #18-40 (mirrored)  
 BLOCK 16 #18-49  
 BLOCK 18 #18-60 (mirrored)



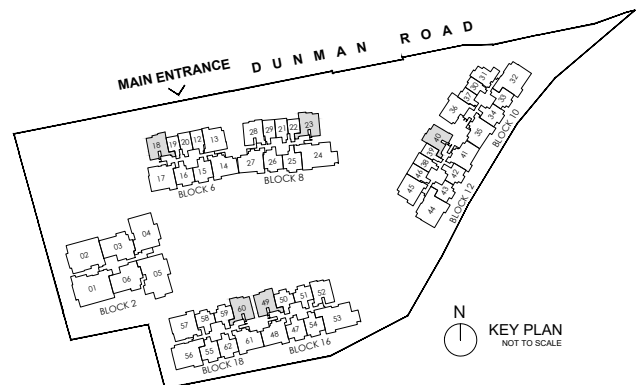
Dotted line denotes strata void complete with bulkhead at unit Type 3BR 1-H

### LEGEND:

F	FRIDGE	AC	AIR-CONDITIONER
WD	WASHER CUM DRYER	RC	REINFORCED CONCRETE (EXCLUDED FROM STRATA AREA)
DB	DISTRIBUTION BOARD	⊠	VOID SPACE (EXCLUDED FROM STRATA AREA)
ST	STORE		



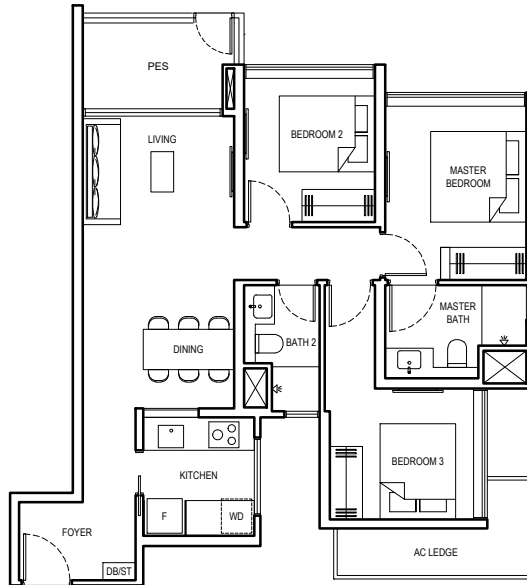
ALL PLANS ARE SUBJECT TO CHANGES BY THE RELEVANT AUTHORITIES.  
 MEASUREMENTS ARE APPROXIMATE ONLY AND SUBJECT TO FINAL SURVEY.  
 INFORMATION ACCURATE AT POINT OF PRINTING.  
 BP NO.: A1716-00003-2022-BP01 DATED 15 MAY 2023



# 3 BEDROOM (LUXURY)

## TYPE 3BR 2-PES

87 SQM/ 936 SQFT  
(INCLUSIVE OF 6 SQM PES & 5 SQM AC LEDGE)  
BLOCK 16 #01-52



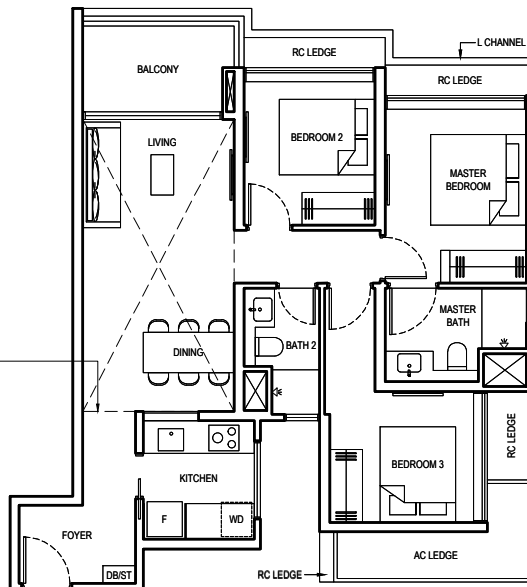
## TYPE 3BR 2

87 SQM/ 936 SQFT  
(INCLUSIVE OF 6 SQM BALCONY & 5 SQM AC LEDGE)  
BLOCK 16 #02-52 to #17-52

## TYPE 3BR 2-H

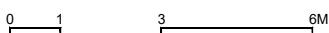
106 SQM/ 1141 SQFT  
(INCLUSIVE OF 6 SQM BALCONY,  
5 SQM AC LEDGE & 19 SQM STRATA VOID)  
BLOCK 16 #18-52

Dotted line denotes strata void complete with bulkhead at unit Type 3BR 2-H

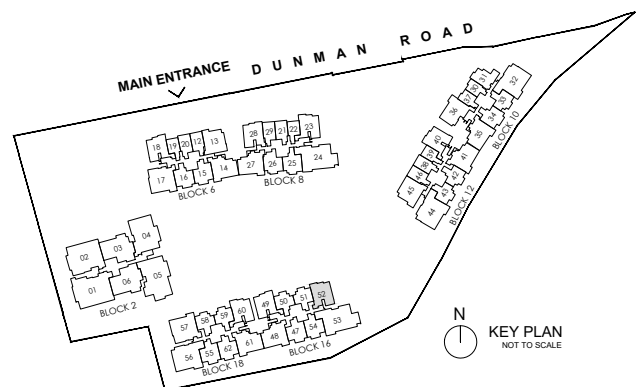


### LEGEND:

F	FRIDGE	AC	AIR-CONDITIONER
WD	WASHER CUM DRYER	RC	REINFORCED CONCRETE (EXCLUDED FROM STRATA AREA)
DB	DISTRIBUTION BOARD	⊠	VOID SPACE (EXCLUDED FROM STRATA AREA)
ST	STORE		



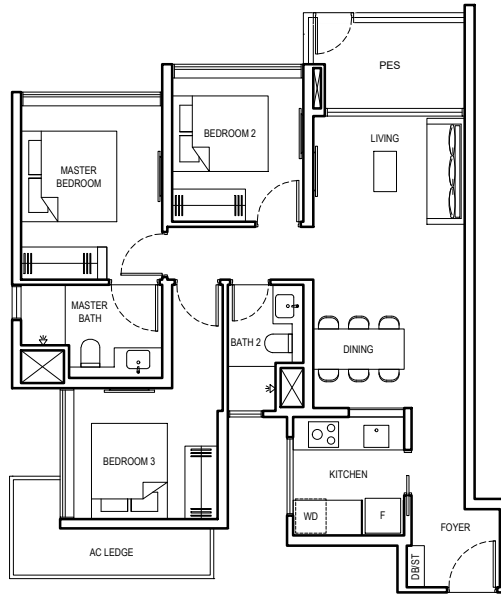
ALL PLANS ARE SUBJECT TO CHANGES BY THE RELEVANT AUTHORITIES.  
MEASUREMENTS ARE APPROXIMATE ONLY AND SUBJECT TO FINAL SURVEY.  
INFORMATION ACCURATE AT POINT OF PRINTING.  
BP NO.: A1716-00003-2022-BP01 DATED 15 MAY 2023



# 3 BEDROOM (LUXURY)

## TYPE 3BR 3-PES

86 SQM/ 926 SQFT  
(INCLUSIVE OF 6 SQM PES & 5 SQM AC LEDGE)  
BLOCK 8 #01-28

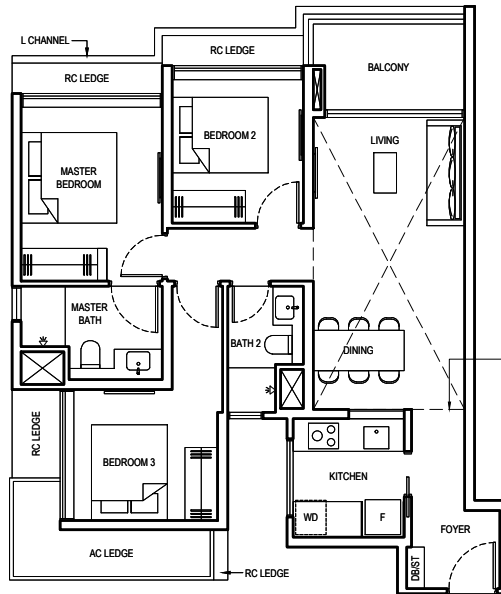


## TYPE 3BR 3

86 SQM/ 926 SQFT  
(INCLUSIVE OF 6 SQM BALCONY & 5 SQM AC LEDGE)  
BLOCK 8 #02-28 to #17-28

## TYPE 3BR 3-H

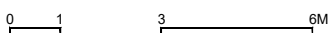
105 SQM/ 1130 SQFT  
(INCLUSIVE OF 6 SQM BALCONY,  
5 SQM AC LEDGE & 19 SQM STRATA VOID)  
BLOCK 8 #18-28



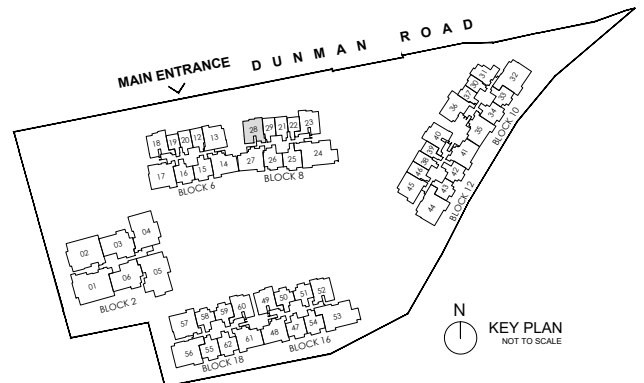
Dotted line denotes strata void complete with bulkhead at unit Type 3BR 3-H

### LEGEND:

F	FRIDGE	AC	AIR-CONDITIONER
WD	WASHER CUM DRYER	RC	REINFORCED CONCRETE (EXCLUDED FROM STRATA AREA)
DB	DISTRIBUTION BOARD	⊠	VOID SPACE (EXCLUDED FROM STRATA AREA)
ST	STORE		



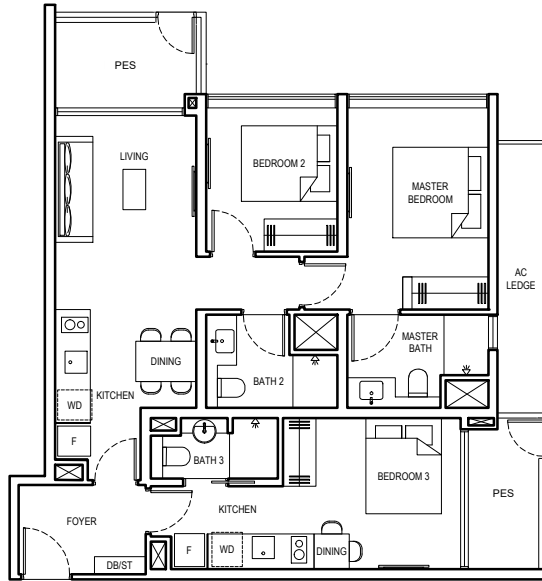
ALL PLANS ARE SUBJECT TO CHANGES BY THE RELEVANT AUTHORITIES.  
MEASUREMENTS ARE APPROXIMATE ONLY AND SUBJECT TO FINAL SURVEY.  
INFORMATION ACCURATE AT POINT OF PRINTING.  
BP NO.: A1716-00003-2022-BP01 DATED 15 MAY 2023



# 3 BEDROOM DUAL KEY (LUXURY)

## TYPE 3BR DK1-PES

97 SQM/ 1044 SQFT  
 (INCLUSIVE OF 11 SQM PES & 6 SQM AC LEDGE)  
 BLOCK 6 #01-13

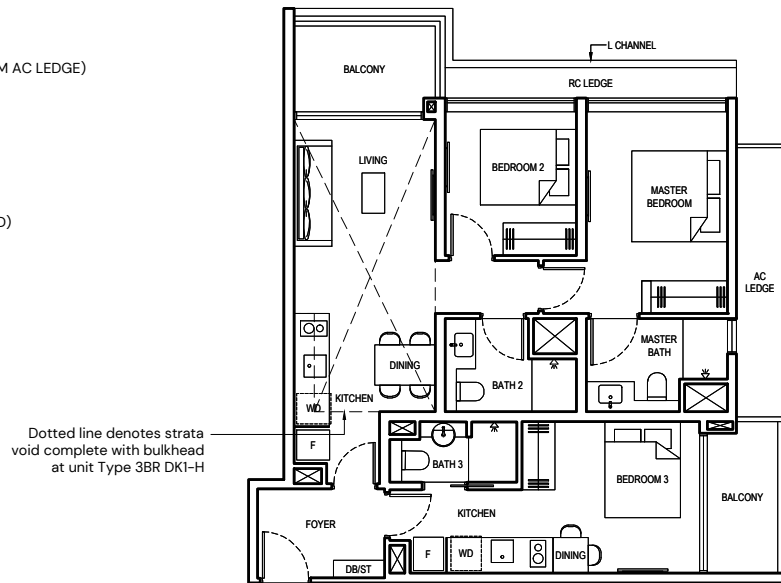


## TYPE 3BR DK1

97 SQM/ 1044 SQFT  
 (INCLUSIVE OF 11 SQM BALCONY & 6 SQM AC LEDGE)  
 BLOCK 6 #02-13 to #17-13

## TYPE 3BR DK1-H

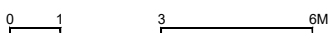
114 SQM/ 1227 SQFT  
 (INCLUSIVE OF 11 SQM BALCONY,  
 6 SQM AC LEDGE & 17 SQM STRATA VOID)  
 BLOCK 6 #18-13



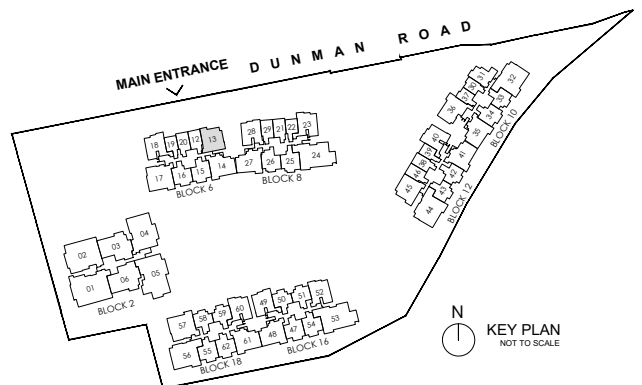
Dotted line denotes strata void complete with bulkhead at unit Type 3BR DK1-H

### LEGEND:

- |    |                    |    |   |
|----|--------------------|----|---|
| F  | FRIDGE             | AC | AIR-CONDITIONER                                 |
| WD | WASHER CUM DRYER   | RC | REINFORCED CONCRETE (EXCLUDED FROM STRATA AREA) |
| DB | DISTRIBUTION BOARD | ⊠  | VOID SPACE (EXCLUDED FROM STRATA AREA)          |
| ST | STORE              |    |   |



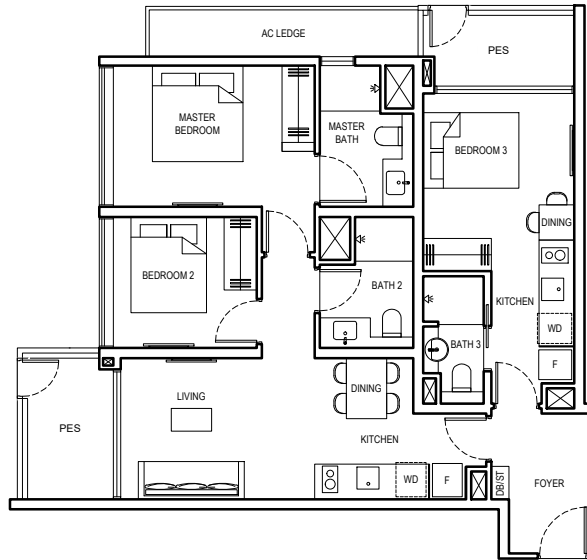
ALL PLANS ARE SUBJECT TO CHANGES BY THE RELEVANT AUTHORITIES.  
 MEASUREMENTS ARE APPROXIMATE ONLY AND SUBJECT TO FINAL SURVEY.  
 INFORMATION ACCURATE AT POINT OF PRINTING.  
 BP NO.: A1716-00003-2022-BP01 DATED 15 MAY 2023



# 3 BEDROOM DUAL KEY (LUXURY)

## TYPE 3BR DK2-PES

98 SQM/ 1055 SQFT  
(INCLUSIVE OF 11 SQM PES & 6 SQM AC LEDGE)  
BLOCK 12 #01-45

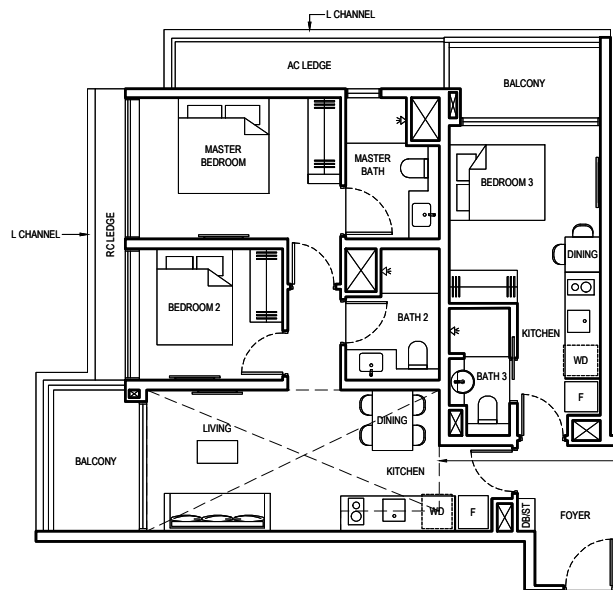


## TYPE 3BR DK2

98 SQM/ 1055 SQFT  
(INCLUSIVE OF 11 SQM BALCONY & 6 SQM AC LEDGE)  
BLOCK 12 #02-45 to #17-45

## TYPE 3BR DK2-H

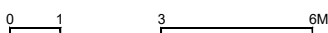
115 SQM/ 1238 SQFT  
(INCLUSIVE OF 11 SQM BALCONY,  
6 SQM AC LEDGE & 7 SQM STRATA VOID)  
BLOCK 12 #18-45



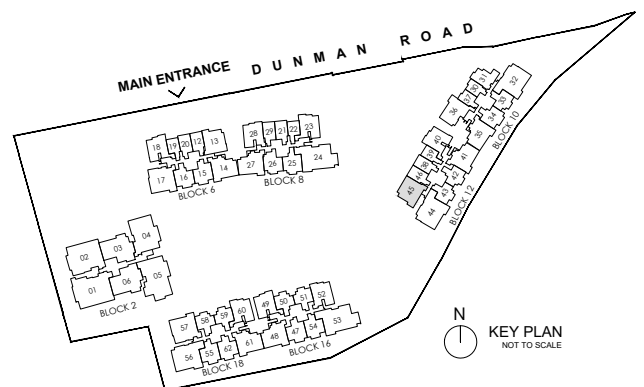
Dotted line denotes strata void complete with bulkhead at unit Type 3BR DK2-H

### LEGEND:

F	FRIDGE	AC	AIR-CONDITIONER
WD	WASHER CUM DRYER	RC	REINFORCED CONCRETE (EXCLUDED FROM STRATA AREA)
DB	DISTRIBUTION BOARD	⊠	VOID SPACE (EXCLUDED FROM STRATA AREA)
ST	STORE		



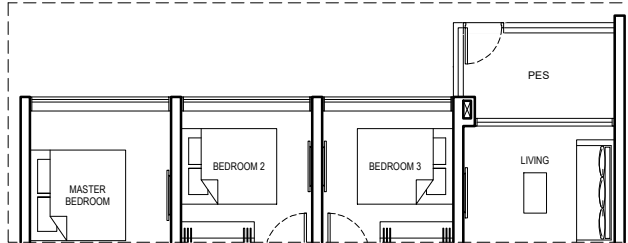
ALL PLANS ARE SUBJECT TO CHANGES BY THE RELEVANT AUTHORITIES.  
MEASUREMENTS ARE APPROXIMATE ONLY AND SUBJECT TO FINAL SURVEY.  
INFORMATION ACCURATE AT POINT OF PRINTING.  
BP NO.: A1716-00003-2022-BP01 DATED 15 MAY 2023



# 3 BEDROOM FLEX (LUXURY)

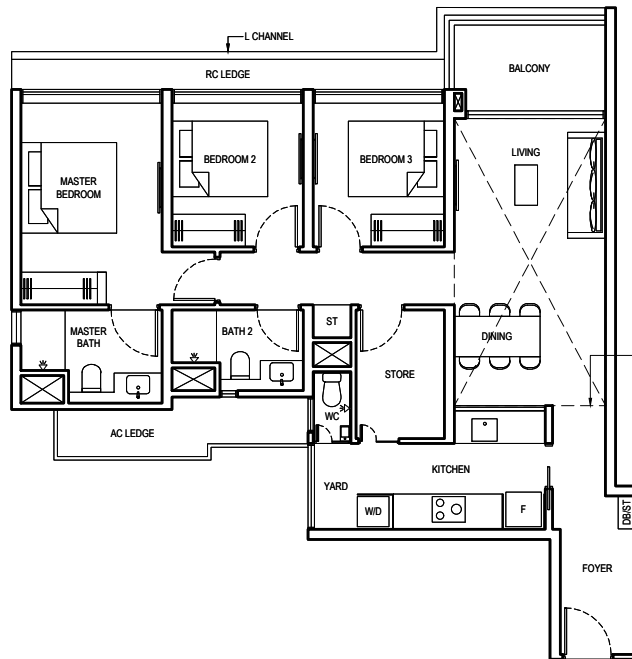
## TYPE 3BR FLEX-PES

102 SQM/ 1098 SQFT  
 (INCLUSIVE OF 6 SQM PES & 6 SQM AC LEDGE)  
 BLOCK 10 #01-36



## TYPE 3BR FLEX

102 SQM/ 1098 SQFT  
 (INCLUSIVE OF 6 SQM BALCONY & 6 SQM AC LEDGE)  
 BLOCK 10 #02-36 to #17-36



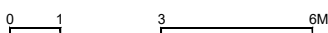
Dotted line denotes strata void complete with bulkhead at unit Type 3BR FLEX-H

## TYPE 3BR FLEX-H

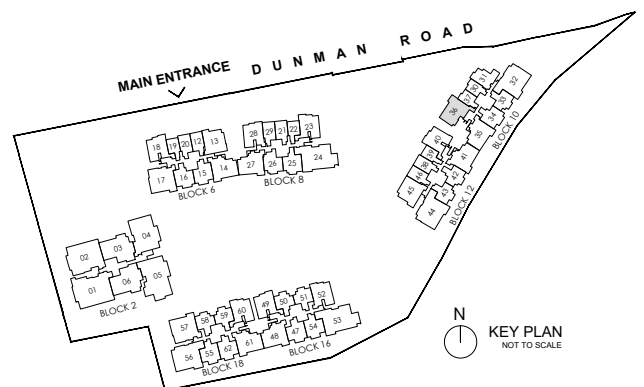
121 SQM/ 1302 SQFT  
 (INCLUSIVE OF 6 SQM BALCONY,  
 6 SQM AC LEDGE & 19 SQM STRATA VOID)  
 BLOCK 10 #18-36

### LEGEND:

- |     |                    |    |   |
|-----|--------------------|----|---|
| F   | FRIDGE             | AC | AIR-CONDITIONER                                 |
| W/D | WASHER AND DRYER   | RC | REINFORCED CONCRETE (EXCLUDED FROM STRATA AREA) |
| DB  | DISTRIBUTION BOARD | ⊠  | VOID SPACE (EXCLUDED FROM STRATA AREA)          |
| ST  | STORE              |    |   |
| WC  | WATER CLOSET       |    |   |



ALL PLANS ARE SUBJECT TO CHANGES BY THE RELEVANT AUTHORITIES.  
 MEASUREMENTS ARE APPROXIMATE ONLY AND SUBJECT TO FINAL SURVEY.  
 INFORMATION ACCURATE AT POINT OF PRINTING.  
 BP NO.: A1716-00003-2022-BP01 DATED 15 MAY 2023



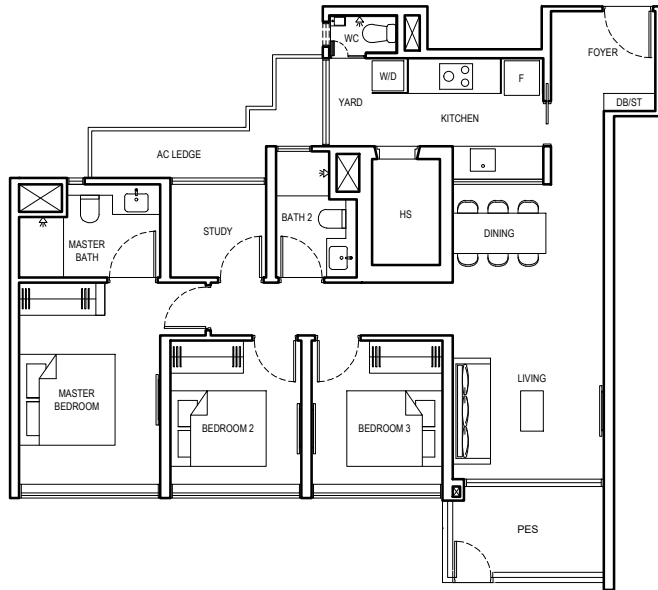
N  
 KEY PLAN  
 NOT TO SCALE

# 3 BEDROOM + STUDY (LUXURY)

## TYPE 3BR LS-PES

104 SQM/ 1119 SQFT  
(INCLUSIVE OF 6 SQM PES & 6 SQM AC LEDGE)

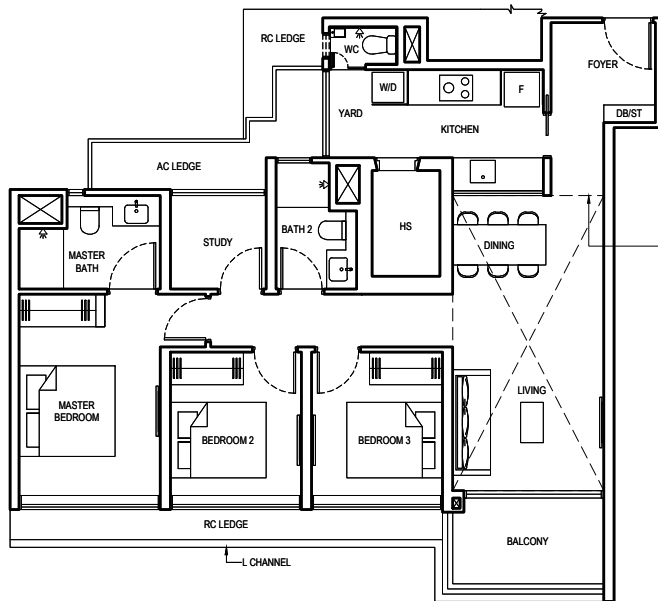
- BLOCK 6 #01-14 (mirrored)
- BLOCK 8 #01-27
- BLOCK 10 #01-35
- BLOCK 12 #01-41 (mirrored)
- BLOCK 16 #01-48
- BLOCK 18 #01-61 (mirrored)



## TYPE 3BR LS

104 SQM/ 1119 SQFT  
(INCLUSIVE OF 6 SQM BALCONY & 6 SQM AC LEDGE)

- BLOCK 6 #02-14 to #17-14 (mirrored)
- BLOCK 8 #02-27 to #17-27
- BLOCK 10 #02-35 to #17-35
- BLOCK 12 #02-41 to #17-41 (mirrored)
- BLOCK 16 #02-48 to #17-48
- BLOCK 18 #02-61 to #17-61 (mirrored)



Dotted line denotes strata void complete with bulkhead at unit Type 3BR LS-H

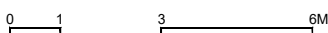
## TYPE 3BR LS-H

124 SQM/ 1335 SQFT  
(INCLUSIVE OF 6 SQM BALCONY,  
6 SQM AC LEDGE & 20 SQM STRATA VOID)

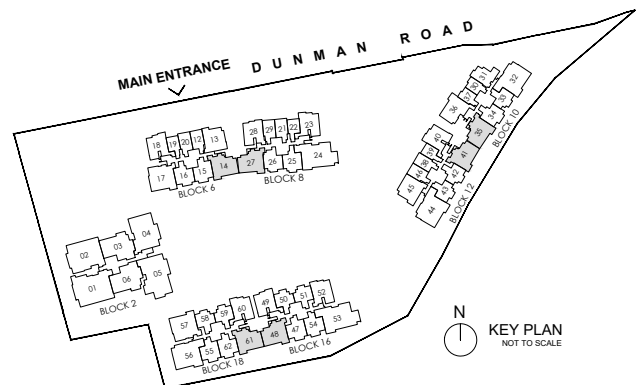
- BLOCK 6 #18-14 (mirrored)

### LEGEND:

- |     |                    |    |   |
|-----|--------------------|----|---|
| F   | FRIDGE             | HS | HOUSEHOLD SHELTER                               |
| W/D | WASHER AND DRYER   | AC | AIR-CONDITIONER                                 |
| DB  | DISTRIBUTION BOARD | RC | REINFORCED CONCRETE (EXCLUDED FROM STRATA AREA) |
| ST  | STORE              | ⊠  | VOID SPACE (EXCLUDED FROM STRATA AREA)          |
| WC  | WATER CLOSET       |    |   |



ALL PLANS ARE SUBJECT TO CHANGES BY THE RELEVANT AUTHORITIES.  
MEASUREMENTS ARE APPROXIMATE ONLY AND SUBJECT TO FINAL SURVEY.  
INFORMATION ACCURATE AT POINT OF PRINTING.  
BP NO.: A1716-00003-2022-BP01 DATED 15 MAY 2023

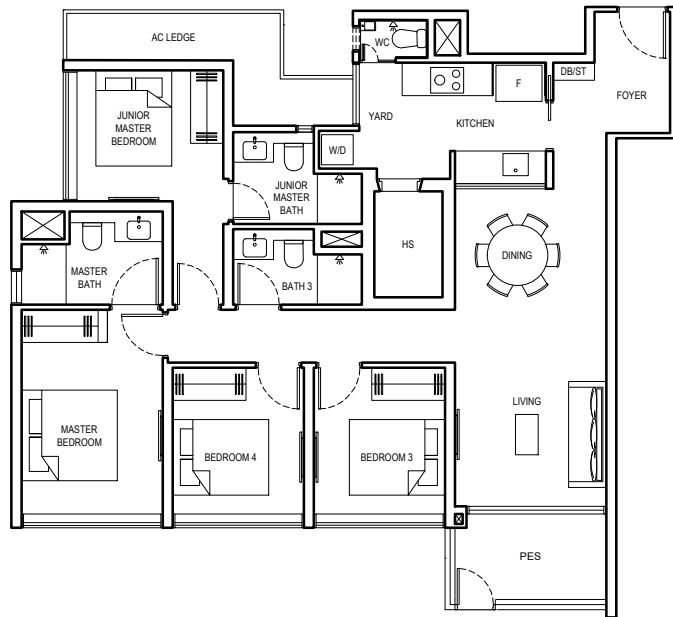


N  
KEY PLAN  
NOT TO SCALE

# 4 BEDROOM (LUXURY)

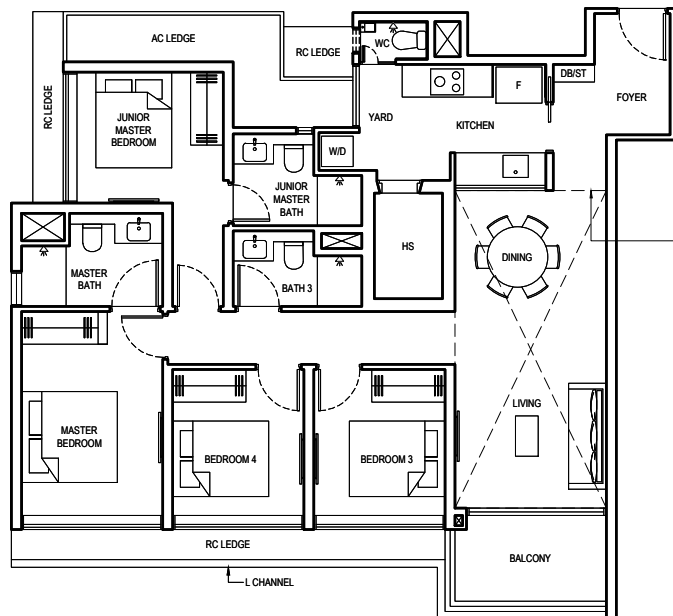
## TYPE 4BR-PES

120 SQM/ 1292 SQFT  
 (INCLUSIVE OF 6 SQM PES & 8 SQM AC LEDGE)  
 BLOCK 6 #01-17  
 BLOCK 18 #01-57 (mirrored)



## TYPE 4BR

120 SQM/ 1292 SQFT  
 (INCLUSIVE OF 6 SQM BALCONY & 8 SQM AC LEDGE)  
 BLOCK 6 #02-17 to #17-17  
 BLOCK 18 #02-57 to #17-57 (mirrored)



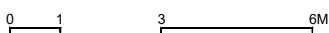
## TYPE 4BR-H

141 SQM/ 1518 SQFT  
 (INCLUSIVE OF 6 SQM BALCONY,  
 8 SQM AC LEDGE & 21 SQM STRATA VOID)  
 BLOCK 6 #18-17  
 BLOCK 18 #18-57 (mirrored)

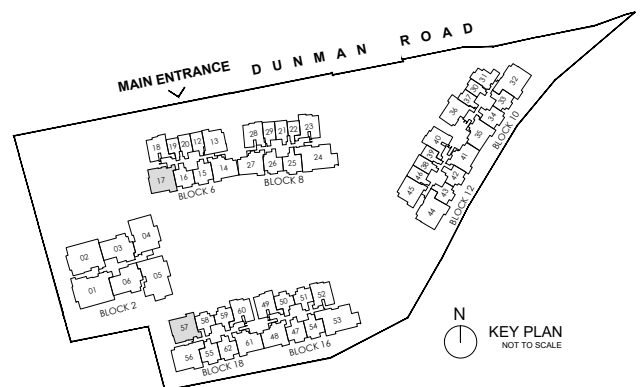
Dotted line denotes strata void complete with bulkhead at unit Type 4BR-H

### LEGEND:

F	FRIDGE	HS	HOUSEHOLD SHELTER
W/D	WASHER AND DRYER	AC	AIR-CONDITIONER
DB	DISTRIBUTION BOARD	RC	REINFORCED CONCRETE (EXCLUDED FROM STRATA AREA)
ST	STORE	☒	VOID SPACE (EXCLUDED FROM STRATA AREA)
WC	WATER CLOSET		



ALL PLANS ARE SUBJECT TO CHANGES BY THE RELEVANT AUTHORITIES.  
 MEASUREMENTS ARE APPROXIMATE ONLY AND SUBJECT TO FINAL SURVEY.  
 INFORMATION ACCURATE AT POINT OF PRINTING.  
 BP NO.: A1716-00003-2022-BP01 DATED 15 MAY 2023



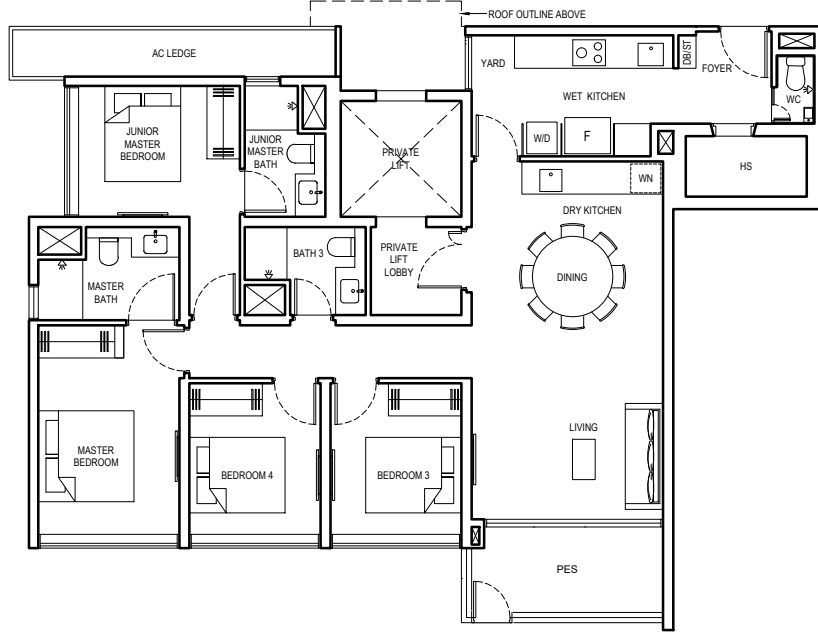
N  
 KEY PLAN  
 NOT TO SCALE



# 4 BEDROOM (LUXURY)

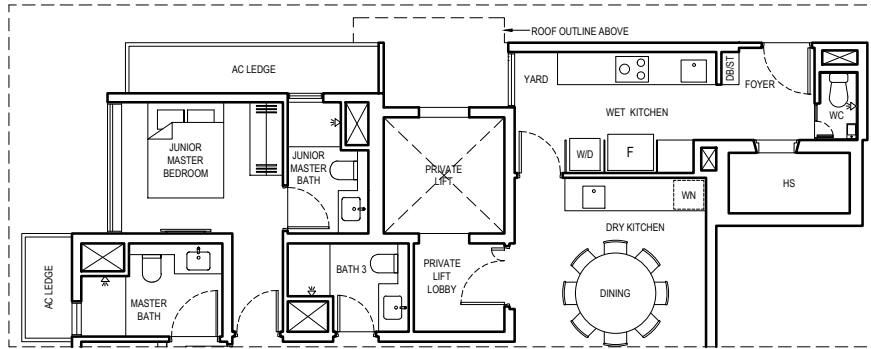
## TYPE 4BR L-PES1

132 SQM/ 1421 SQFT  
 (INCLUSIVE OF 8 SQM PES, 7 SQM AC LEDGE  
 & 4 SQM PRIVATE LIFT LOBBY)  
 BLOCK 12 #01-44  
 BLOCK 18 #01-56



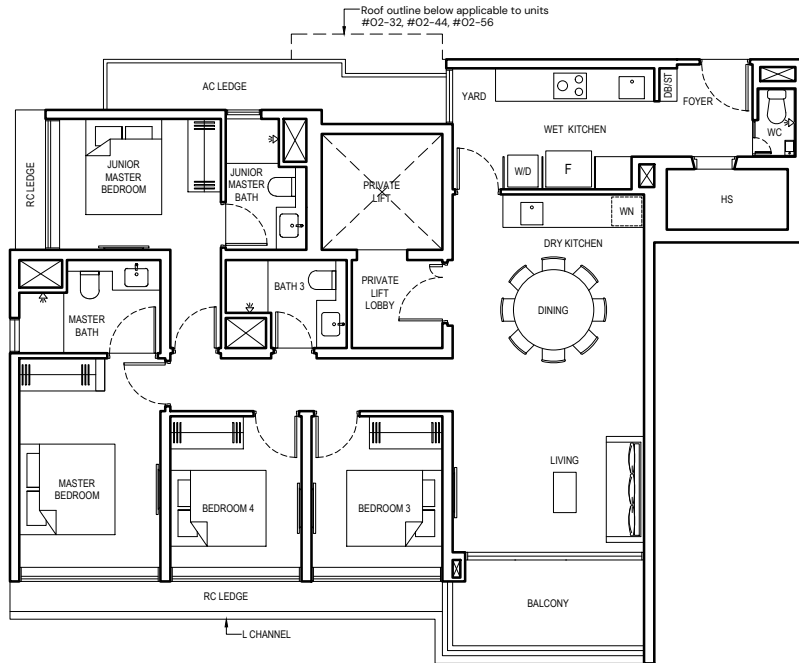
## TYPE 4BR L-PES2

133 SQM/ 1432 SQFT  
 (INCLUSIVE OF 8 SQM PES, 8 SQM AC LEDGE  
 & 4 SQM PRIVATE LIFT LOBBY)  
 BLOCK 10 #01-32 (mirrored)



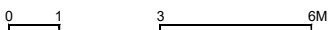
## TYPE 4BR L

133 SQM/ 1432 SQFT  
 (INCLUSIVE OF 8 SQM BALCONY, 8 SQM AC LEDGE  
 & 4 SQM PRIVATE LIFT LOBBY)  
 BLOCK 10 #02-32 to #17-32 (mirrored)  
 BLOCK 12 #02-44 to #17-44  
 BLOCK 18 #02-56 to #17-56

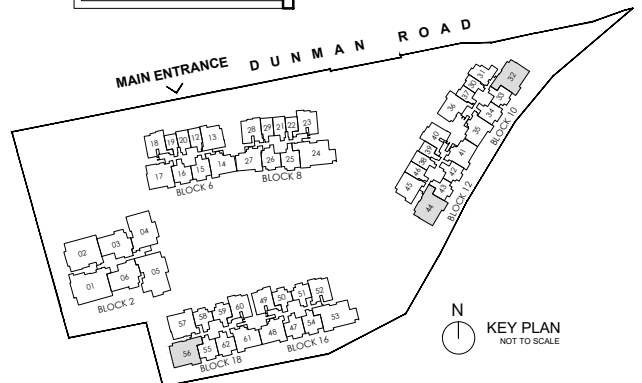


### LEGEND:

- |     |                    |    |   |
|-----|--------------------|----|---|
| F   | FRIDGE             | HS | HOUSEHOLD SHELTER                               |
| W/D | WASHER AND DRYER   | WN | WINE CHILLER                                    |
| DB  | DISTRIBUTION BOARD | AC | AIR-CONDITIONER                                 |
| ST  | STORE              | RC | REINFORCED CONCRETE (EXCLUDED FROM STRATA AREA) |
| WC  | WATER CLOSET       | ⊠  | VOID SPACE (EXCLUDED FROM STRATA AREA)          |



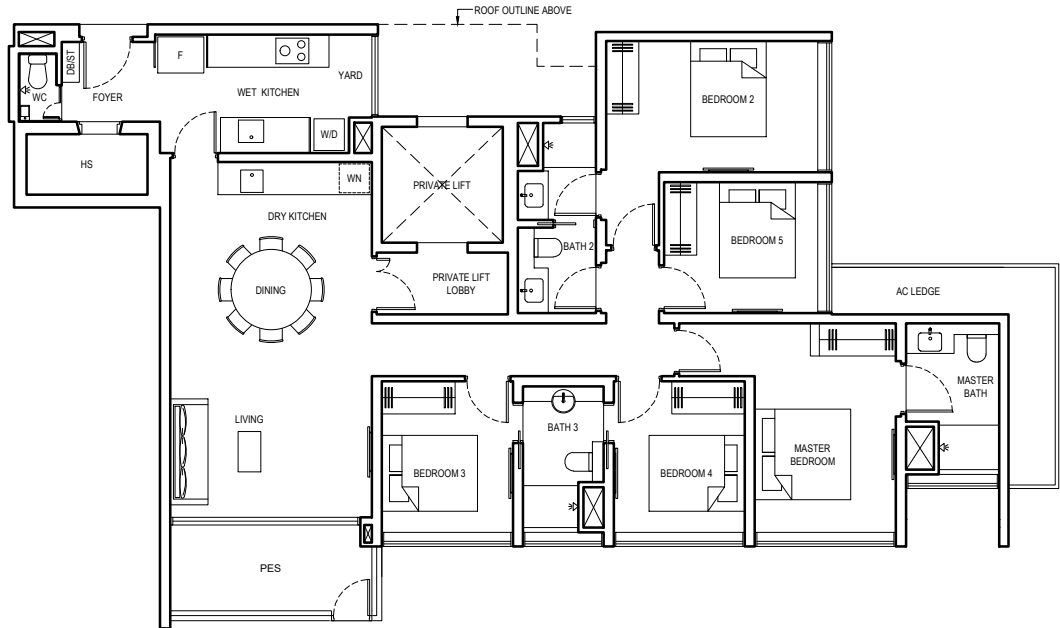
ALL PLANS ARE SUBJECT TO CHANGES BY THE RELEVANT AUTHORITIES.  
 MEASUREMENTS ARE APPROXIMATE ONLY AND SUBJECT TO FINAL SURVEY.  
 INFORMATION ACCURATE AT POINT OF PRINTING.  
 BP NO.: A1716-00003-2022-BP01 DATED 15 MAY 2023



# 5 BEDROOM (LUXURY)

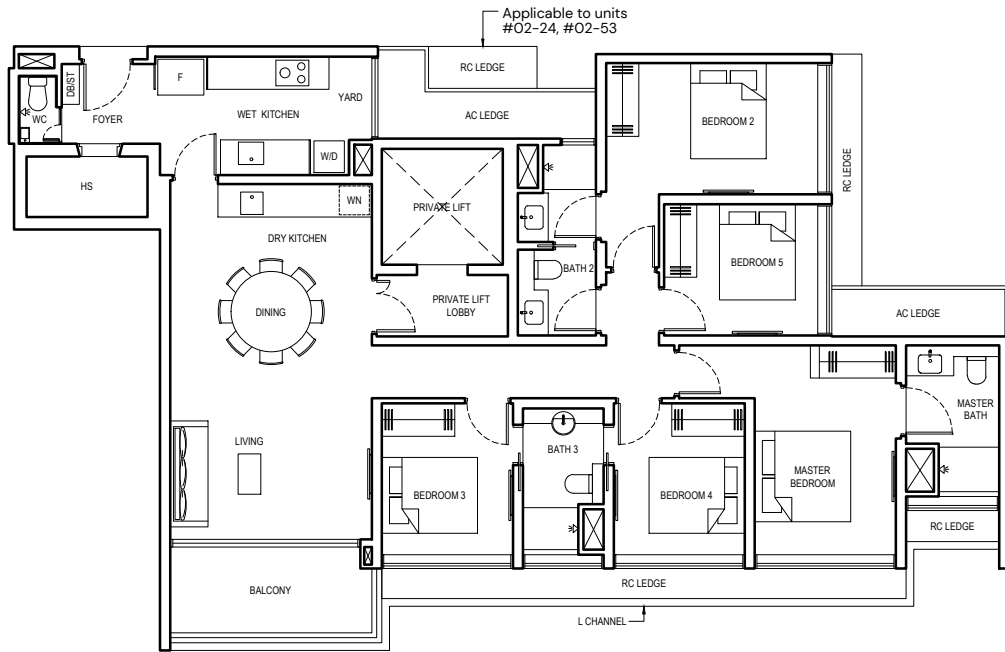
## TYPE 5BR L-PES

156 SQM/ 1679 SQFT  
 (INCLUSIVE OF 8 SQM PES,  
 9 SQM AC LEDGE & 4 SQM  
 PRIVATE LIFT LOBBY)  
 BLOCK 8 #01-24  
 BLOCK 16 #01-53



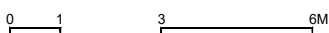
## TYPE 5BR L

157 SQM/ 1690 SQFT  
 (INCLUSIVE OF 8 SQM BALCONY,  
 9 SQM AC LEDGE & 4 SQM  
 PRIVATE LIFT LOBBY)  
 BLOCK 8 #02-24 to #17-24  
 BLOCK 16 #02-53 to #17-53

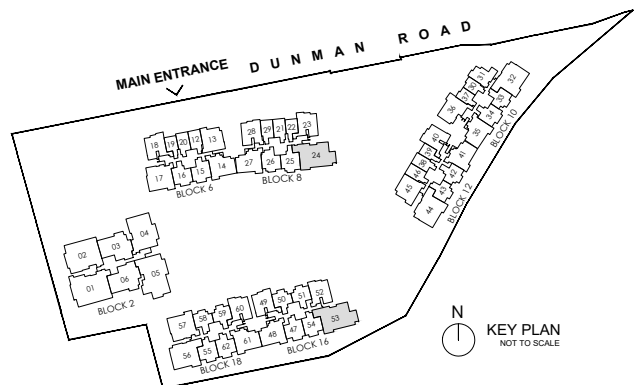


### LEGEND:

- |     |                    |    |   |
|-----|--------------------|----|---|
| F   | FRIDGE             | HS | HOUSEHOLD SHELTER                               |
| W/D | WASHER AND DRYER   | WN | WINE CHILLER                                    |
| DB  | DISTRIBUTION BOARD | AC | AIR-CONDITIONER                                 |
| ST  | STORE              | RC | REINFORCED CONCRETE (EXCLUDED FROM STRATA AREA) |
| WC  | WATER CLOSET       | ⊠  | VOID SPACE (EXCLUDED FROM STRATA AREA)          |



ALL PLANS ARE SUBJECT TO CHANGES BY THE RELEVANT AUTHORITIES.  
 MEASUREMENTS ARE APPROXIMATE ONLY AND SUBJECT TO FINAL SURVEY.  
 INFORMATION ACCURATE AT POINT OF PRINTING.  
 BP NO.: A1716-00003-2022-BP01 DATED 15 MAY 2023



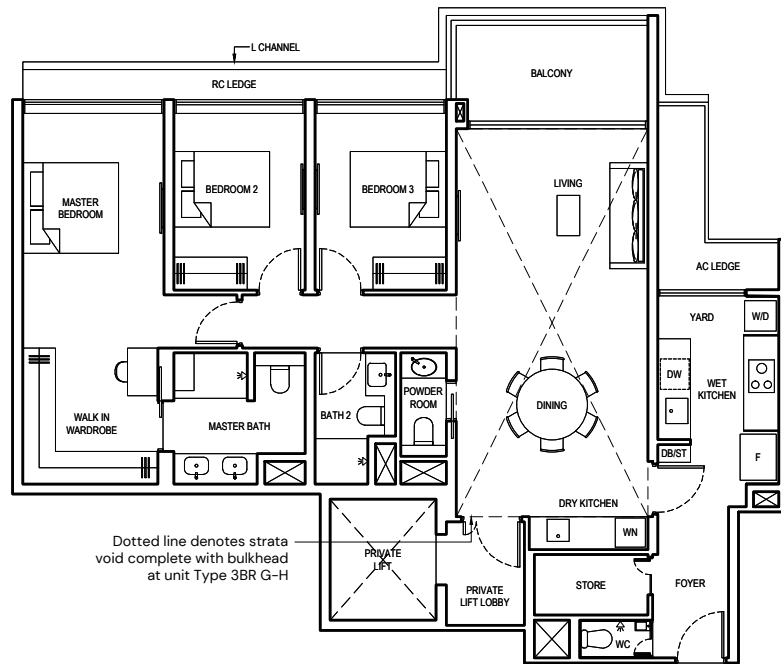
# 3 BEDROOM (GRAND)

## TYPE 3BR G

137 SQM/ 1475 SQFT  
 (INCLUSIVE OF 9 SQM BALCONY, 6 SQM AC LEDGE  
 & 3 SQM PRIVATE LIFT LOBBY)  
 BLOCK 2 #03-03 to #17-03  
 #03-06 to #17-06 (mirrored)

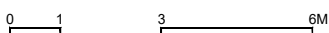
## TYPE 3BR G-H

169 SQM/ 1819 SQFT  
 (INCLUSIVE OF 9 SQM BALCONY, 6 SQM AC LEDGE,  
 3 SQM PRIVATE LIFT LOBBY & 32 SQM STRATA VOID)  
 BLOCK 2 #18-03  
 #18-06 (mirrored)

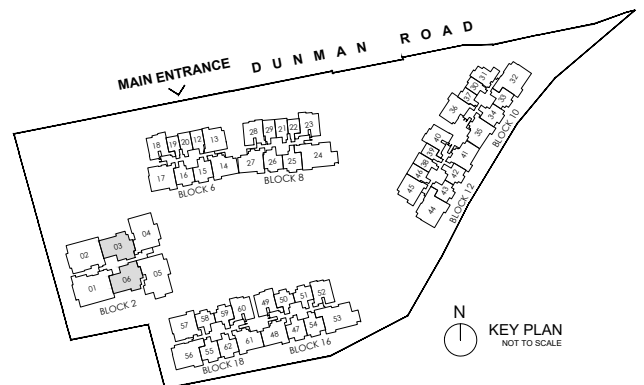


### LEGEND:

F	FRIDGE	WN	WINE CHILLER
W/D	WASHER AND DRYER	DW	DISHWASHER
DB	DISTRIBUTION BOARD	AC	AIR-CONDITIONER
ST	STORE	RC	REINFORCED CONCRETE (EXCLUDED FROM STRATA AREA)
WC	WATER CLOSET	☒	VOID SPACE (EXCLUDED FROM STRATA AREA)



ALL PLANS ARE SUBJECT TO CHANGES BY THE RELEVANT AUTHORITIES.  
 MEASUREMENTS ARE APPROXIMATE ONLY AND SUBJECT TO FINAL SURVEY.  
 INFORMATION ACCURATE AT POINT OF PRINTING.  
 BP NO.: A1716-00003-2022-BP01 DATED 15 MAY 2023



# 4 BEDROOM (GRAND)

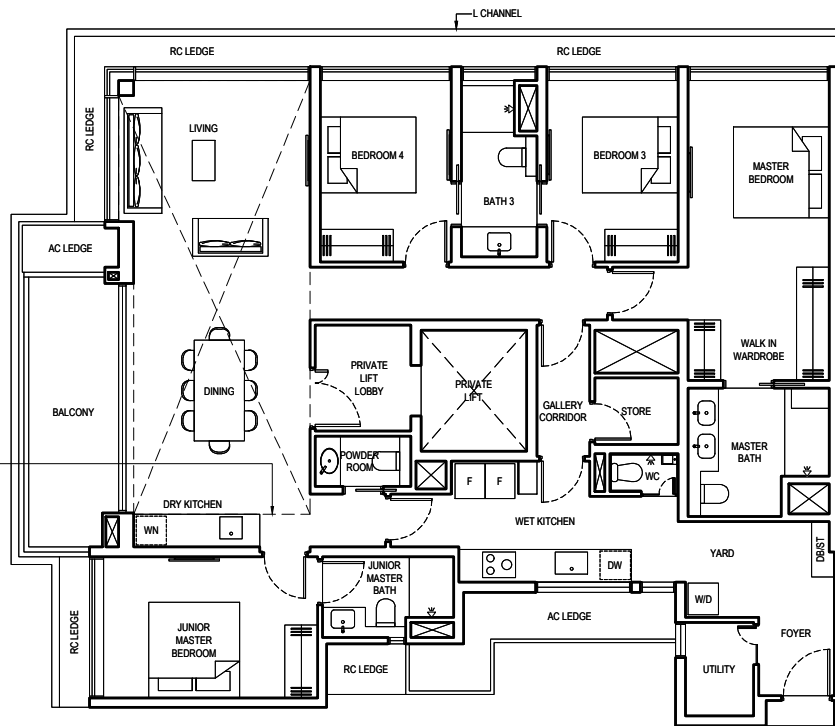
## TYPE 4BR G1

179 SQM/ 1927 SQFT  
 (INCLUSIVE OF 11 SQM BALCONY, 9 SQM AC LEDGE  
 & 5 SQM PRIVATE LIFT LOBBY)  
 BLOCK 2 #03-02 to #17-02

## TYPE 4BR G1-H

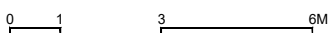
215 SQM/ 2314 SQFT  
 (INCLUSIVE OF 11 SQM BALCONY, 9 SQM AC LEDGE,  
 5 SQM PRIVATE LIFT LOBBY & 36 SQM STRATA VOID)  
 BLOCK 2 #18-02

Dotted line denotes strata  
 void complete with bulkhead  
 at unit Type 4BR G1-H

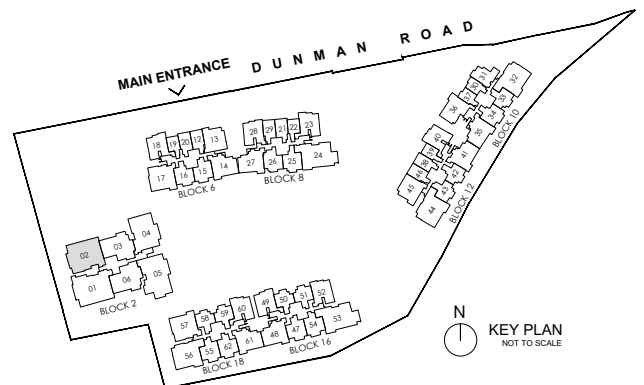


### LEGEND:

- |     |                    |    |   |
|-----|--------------------|----|---|
| F   | FRIDGE             | WN | WINE CHILLER                                    |
| W/D | WASHER AND DRYER   | DW | DISHWASHER                                      |
| DB  | DISTRIBUTION BOARD | AC | AIR-CONDITIONER                                 |
| ST  | STORE              | RC | REINFORCED CONCRETE (EXCLUDED FROM STRATA AREA) |
| WC  | WATER CLOSET       | ⊠  | VOID SPACE (EXCLUDED FROM STRATA AREA)          |



ALL PLANS ARE SUBJECT TO CHANGES BY THE RELEVANT AUTHORITIES.  
 MEASUREMENTS ARE APPROXIMATE ONLY AND SUBJECT TO FINAL SURVEY.  
 INFORMATION ACCURATE AT POINT OF PRINTING.  
 BP NO.: A1716-00003-2022-BP01 DATED 15 MAY 2023

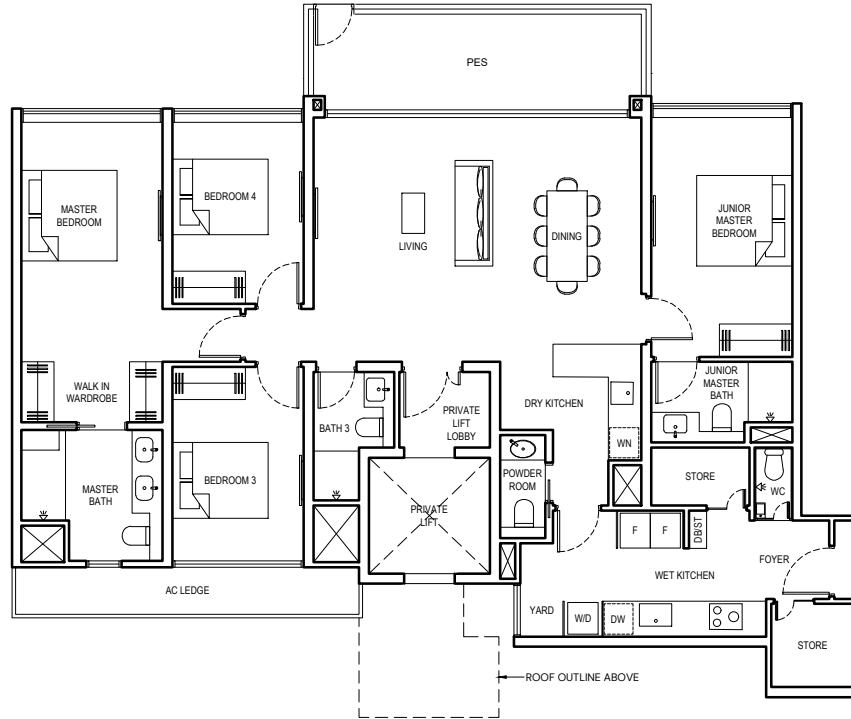


N  
 KEY PLAN  
 NOT TO SCALE

# 4 BEDROOM (GRAND)

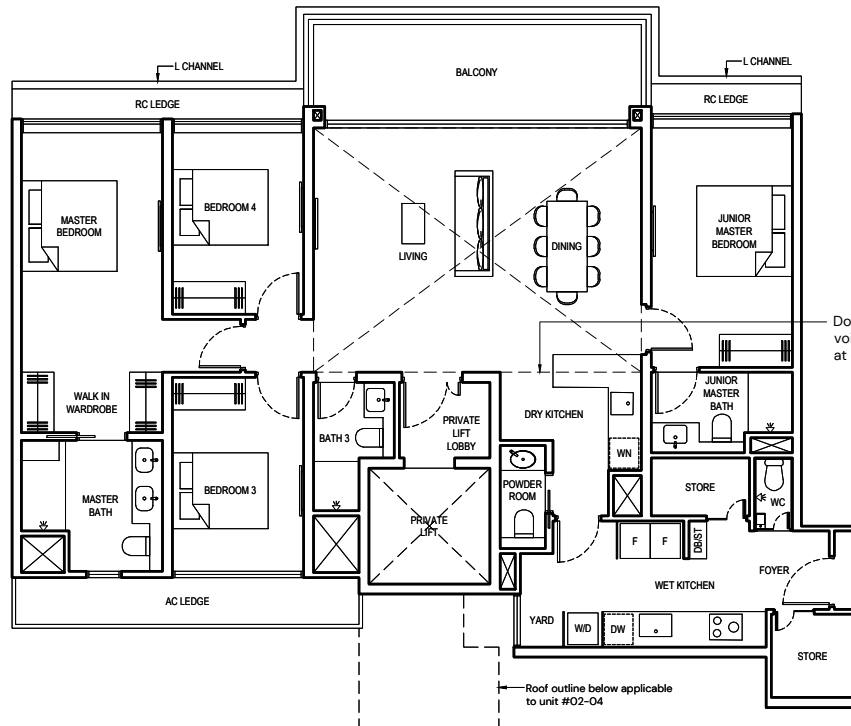
## TYPE 4BR G2-PES

166 SQM/ 1787 SQFT  
 (INCLUSIVE OF 15 SQM PES, 7 SQM AC LEDGE  
 & 4 SQM PRIVATE LIFT LOBBY)  
 BLOCK 2 #01-04



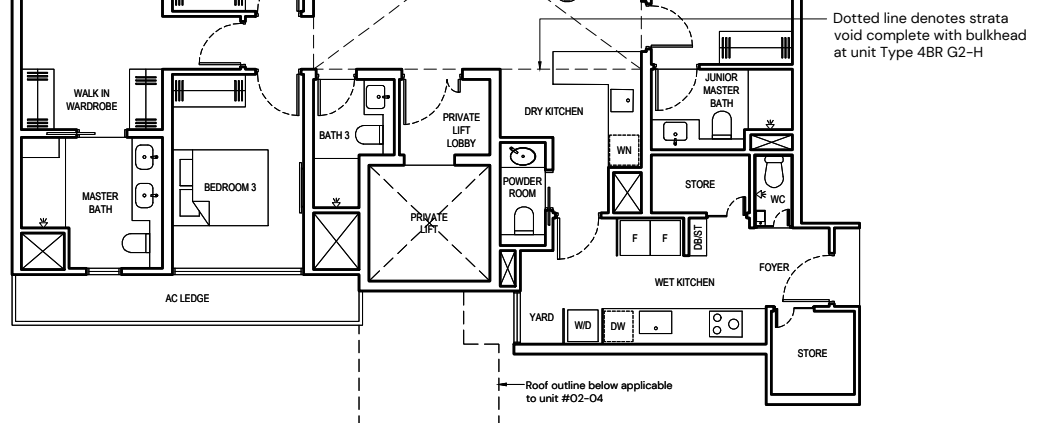
## TYPE 4BR G2

166 SQM/ 1787 SQFT  
 (INCLUSIVE OF 15 SQM BALCONY, 7 SQM AC LEDGE  
 & 4 SQM PRIVATE LIFT LOBBY)  
 BLOCK 2 #02-04 to #17-04



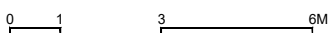
## TYPE 4BR G2-H

200 SQM/ 2153 SQFT  
 (INCLUSIVE OF 15 SQM BALCONY, 7 SQM AC LEDGE,  
 4 SQM PRIVATE LIFT LOBBY & 34 SQM STRATA VOID)  
 BLOCK 2 #18-04

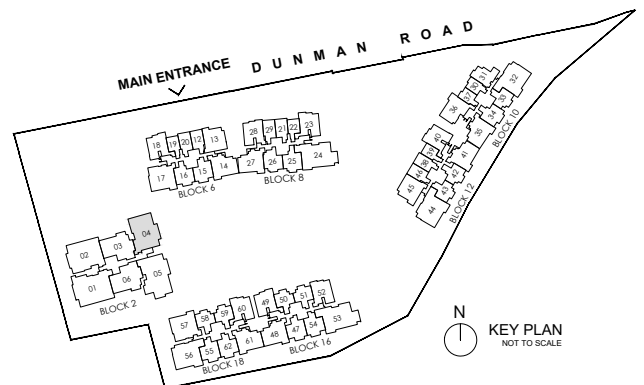


### LEGEND:

- |     |                    |    |   |
|-----|--------------------|----|---|
| F   | FRIDGE             | WN | WINE CHILLER                                    |
| W/D | WASHER AND DRYER   | DW | DISHWASHER                                      |
| DB  | DISTRIBUTION BOARD | AC | AIR-CONDITIONER                                 |
| ST  | STORE              | RC | REINFORCED CONCRETE (EXCLUDED FROM STRATA AREA) |
| WC  | WATER CLOSET       | ⊠  | VOID SPACE (EXCLUDED FROM STRATA AREA)          |



ALL PLANS ARE SUBJECT TO CHANGES BY THE RELEVANT AUTHORITIES.  
 MEASUREMENTS ARE APPROXIMATE ONLY AND SUBJECT TO FINAL SURVEY.  
 INFORMATION ACCURATE AT POINT OF PRINTING.  
 BP NO.: A1716-00003-2022-BP01 DATED 15 MAY 2023



# 5 BEDROOM (GRAND)

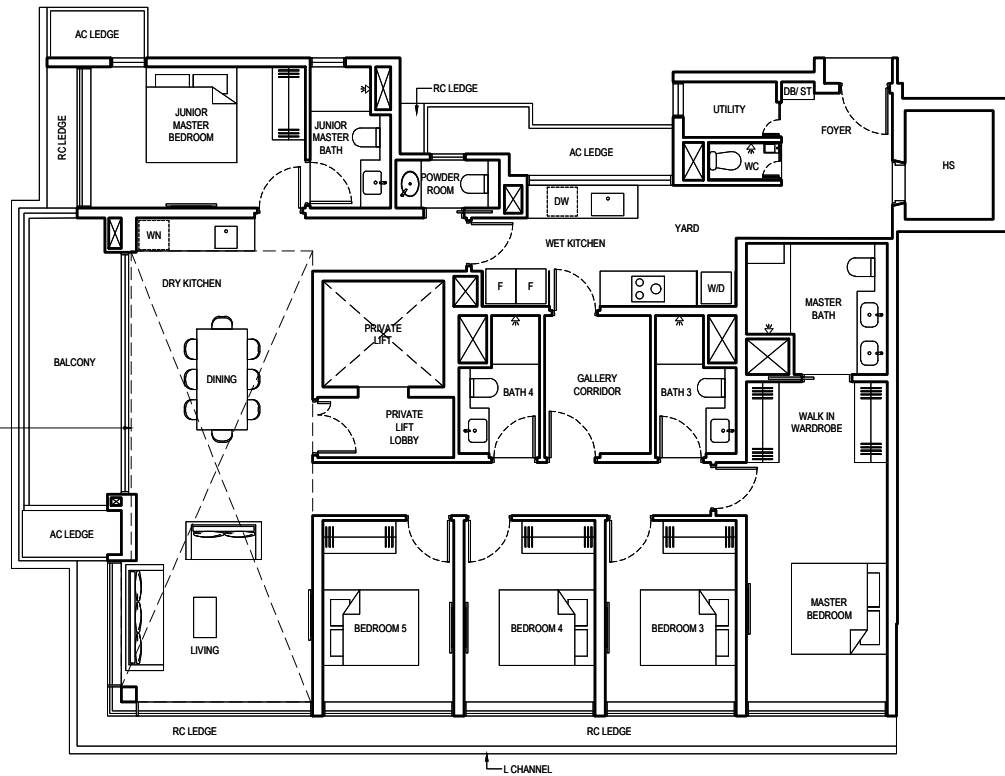
## TYPE 5BR G1

206 SQM/ 2217 SQFT  
 (INCLUSIVE OF 12 SQM BALCONY,  
 10 SQM AC LEDGE & 4 SQM  
 PRIVATE LIFT LOBBY)  
 BLOCK 2 #03-01 to #17-01

## TYPE 5BR G1-H

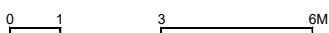
243 SQM/ 2615 SQFT  
 (INCLUSIVE OF 12 SQM BALCONY,  
 10 SQM AC LEDGE, 4 SQM PRIVATE  
 LIFT LOBBY & 37 SQM STRATA VOID)  
 BLOCK 2 #18-01

Dotted line denotes strata  
 void complete with bulkhead  
 at unit Type 5BR G1-H

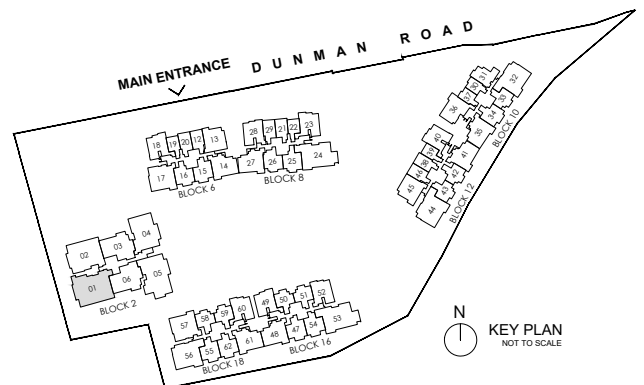


### LEGEND:

- |     |                    |    |   |
|-----|--------------------|----|---|
| F   | FRIDGE             | WN | WINE CHILLER                                    |
| W/D | WASHER AND DRYER   | DW | DISHWASHER                                      |
| DB  | DISTRIBUTION BOARD | AC | AIR-CONDITIONER                                 |
| ST  | STORE              | RC | REINFORCED CONCRETE (EXCLUDED FROM STRATA AREA) |
| WC  | WATER CLOSET       | ⊠  | VOID SPACE (EXCLUDED FROM STRATA AREA)          |
| HS  | HOUSEHOLD SHELTER  |    |   |



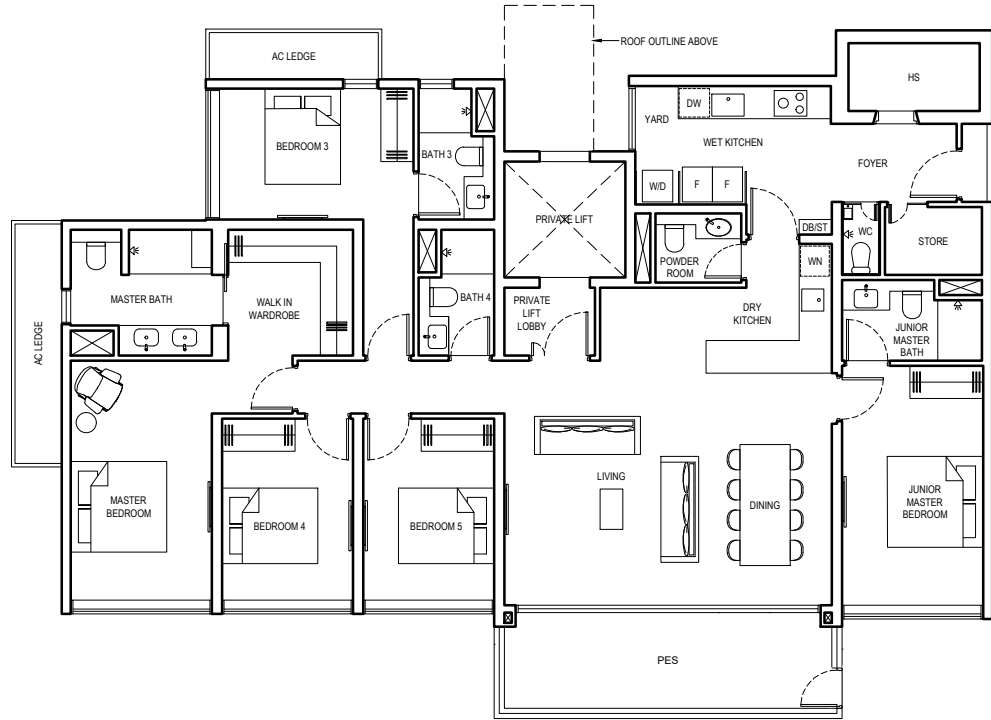
ALL PLANS ARE SUBJECT TO CHANGES BY THE RELEVANT AUTHORITIES.  
 MEASUREMENTS ARE APPROXIMATE ONLY AND SUBJECT TO FINAL SURVEY.  
 INFORMATION ACCURATE AT POINT OF PRINTING.  
 BP NO.: A1716-00003-2022-BP01 DATED 15 MAY 2023



# 5 BEDROOM (GRAND)

## TYPE 5BR G2-PES

198 SQM/ 2131 SQFT  
 (INCLUSIVE OF 15 SQM PES,  
 9 SQM AC LEDGE & 3 SQM  
 PRIVATE LIFT LOBBY)  
 BLOCK 2 #01-05

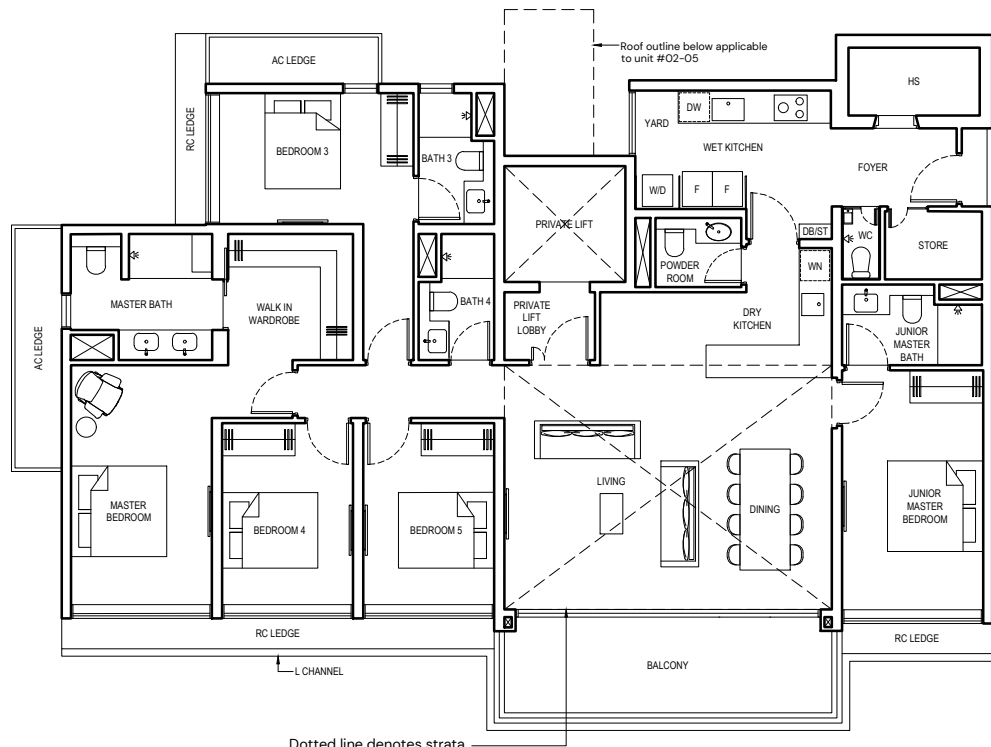


## TYPE 5BR G2

198 SQM/ 2131 SQFT  
 (INCLUSIVE OF 15 SQM BALCONY,  
 9 SQM AC LEDGE & 3 SQM  
 PRIVATE LIFT LOBBY)  
 BLOCK 2 #02-05 to #17-05

## TYPE 5BR G2-H

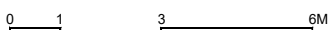
232 SQM/ 2497 SQFT  
 (INCLUSIVE OF 15 SQM BALCONY,  
 9 SQM AC LEDGE, 3 SQM PRIVATE  
 LIFT LOBBY & 34 SQM STRATA VOID)  
 BLOCK 2 #18-05



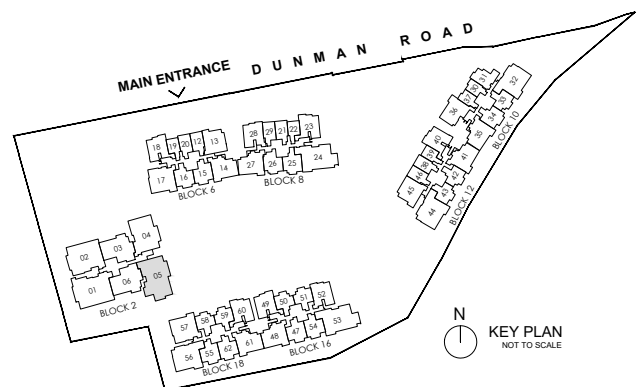
Dotted line denotes strata void complete with bulkhead at unit Type 5BR G2-H

### LEGEND:

- |     |                    |    |   |
|-----|--------------------|----|---|
| F   | FRIDGE             | WN | WINE CHILLER                                    |
| W/D | WASHER AND DRYER   | DW | DISHWASHER                                      |
| DB  | DISTRIBUTION BOARD | AC | AIR-CONDITIONER                                 |
| ST  | STORE              | RC | REINFORCED CONCRETE (EXCLUDED FROM STRATA AREA) |
| WC  | WATER CLOSET       | ⊠  | VOID SPACE (EXCLUDED FROM STRATA AREA)          |
| HS  | HOUSEHOLD SHELTER  |    |   |



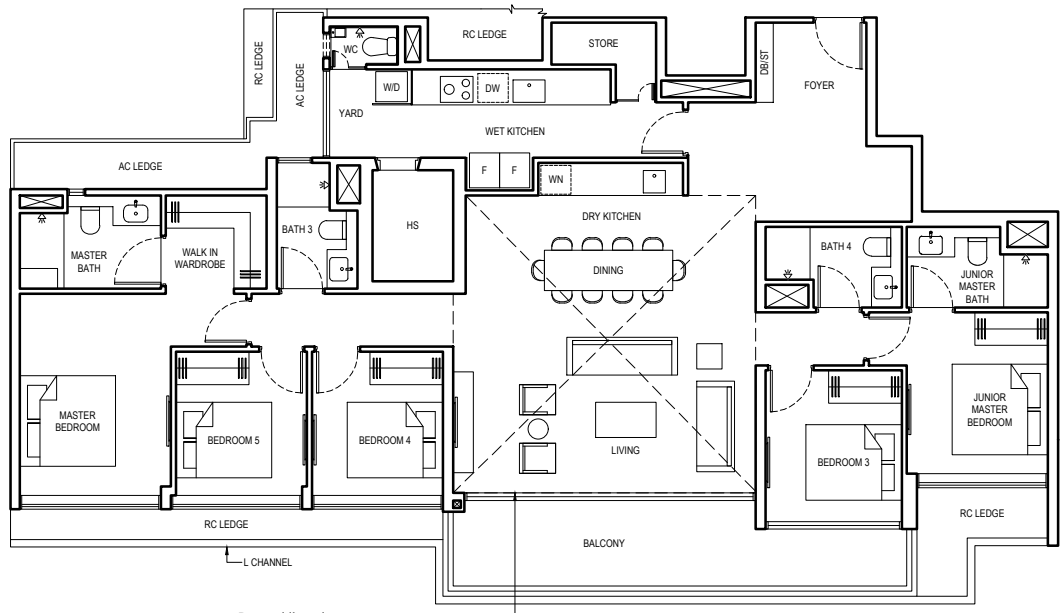
ALL PLANS ARE SUBJECT TO CHANGES BY THE RELEVANT AUTHORITIES.  
 MEASUREMENTS ARE APPROXIMATE ONLY AND SUBJECT TO FINAL SURVEY.  
 INFORMATION ACCURATE AT POINT OF PRINTING.  
 BP NO.: A1716-00003-2022-BP01 DATED 15 MAY 2023



# PENTHOUSE (GRAND)

## TYPE PH-1

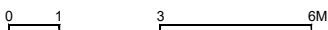
221 SQM/ 2379 SQFT  
 (INCLUSIVE OF 16 SQM BALCONY,  
 9 SQM AC LEDGE & 38 SQM STRATA VOID)  
 BLOCK 10 #18-34



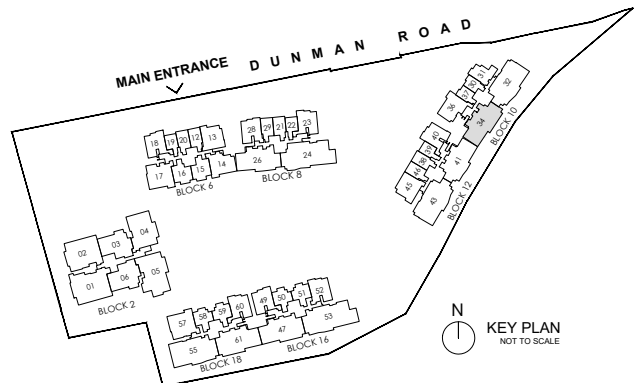
Dotted line denotes strata void complete with bulkhead

### LEGEND:

- |     |                    |    |   |
|-----|--------------------|----|---|
| F   | FRIDGE             | WN | WINE CHILLER                                    |
| W/D | WASHER AND DRYER   | DW | DISHWASHER                                      |
| DB  | DISTRIBUTION BOARD | AC | AIR-CONDITIONER                                 |
| ST  | STORE              | RC | REINFORCED CONCRETE (EXCLUDED FROM STRATA AREA) |
| WC  | WATER CLOSET       | ☒  | VOID SPACE (EXCLUDED FROM STRATA AREA)          |
| HS  | HOUSEHOLD SHELTER  |    |   |



ALL PLANS ARE SUBJECT TO CHANGES BY THE RELEVANT AUTHORITIES.  
 MEASUREMENTS ARE APPROXIMATE ONLY AND SUBJECT TO FINAL SURVEY.  
 INFORMATION ACCURATE AT POINT OF PRINTING.  
 BP NO.: A1716-00003-2022-BP01 DATED 15 MAY 2023

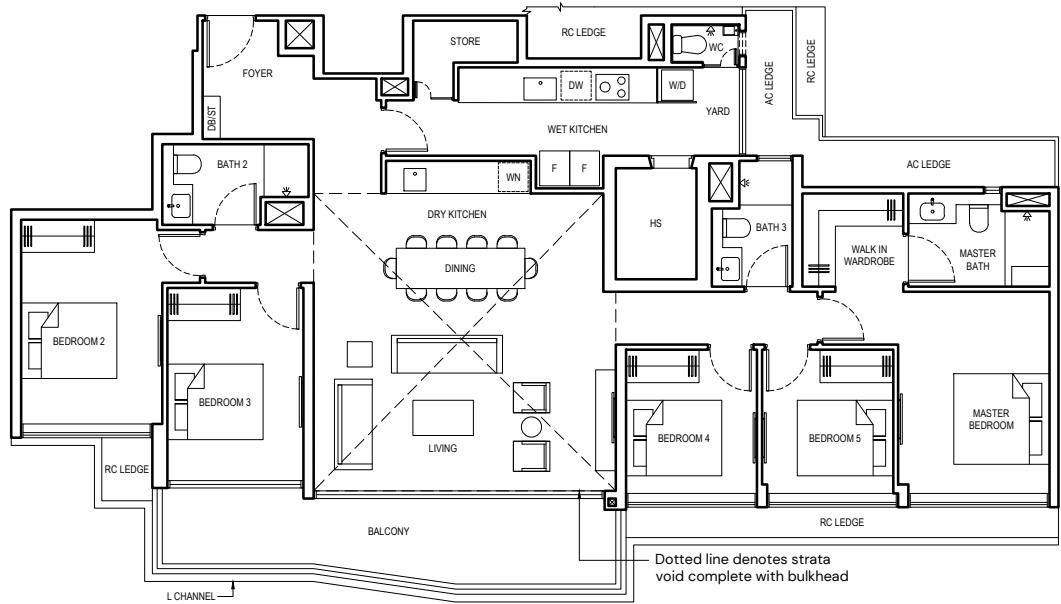




# PENTHOUSE (GRAND)

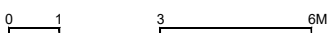
## TYPE PH-2

217 SQM/ 2336 SQFT  
 (INCLUSIVE OF 17 SQM BALCONY,  
 9 SQM AC LEDGE & 38 SQM STRATA VOID)  
 BLOCK 12 #18-41

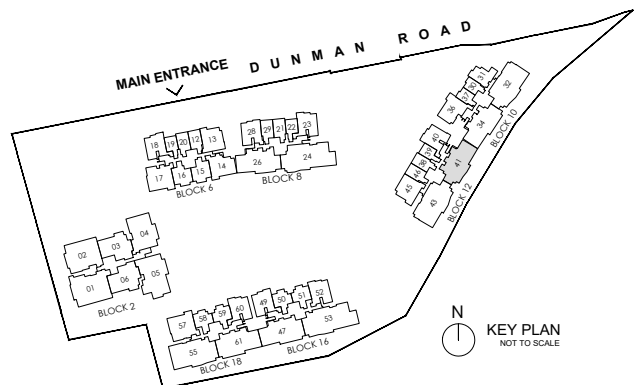


### LEGEND:

F	FRIDGE	WN	WINE CHILLER
W/D	WASHER AND DRYER	DW	DISHWASHER
DB	DISTRIBUTION BOARD	AC	AIR-CONDITIONER
ST	STORE	RC	REINFORCED CONCRETE (EXCLUDED FROM STRATA AREA)
WC	WATER CLOSET	☒	VOID SPACE (EXCLUDED FROM STRATA AREA)
HS	HOUSEHOLD SHELTER		



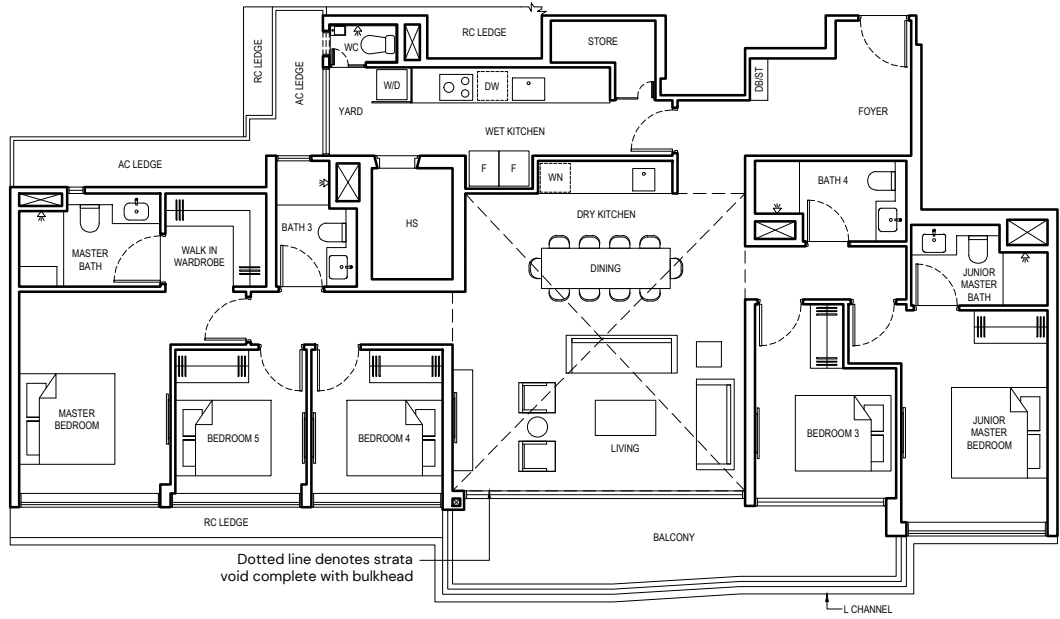
ALL PLANS ARE SUBJECT TO CHANGES BY THE RELEVANT AUTHORITIES.  
 MEASUREMENTS ARE APPROXIMATE ONLY AND SUBJECT TO FINAL SURVEY.  
 INFORMATION ACCURATE AT POINT OF PRINTING.  
 BP NO.: A1716-00003-2022-BP01 DATED 15 MAY 2023



# PENTHOUSE (GRAND)

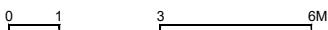
## TYPE PH-3

222 SQM/ 2390 SQFT  
 (INCLUSIVE OF 16 SQM BALCONY,  
 9 SQM AC LEDGE & 36 SQM STRATA VOID)  
 BLOCK 8 #18-26

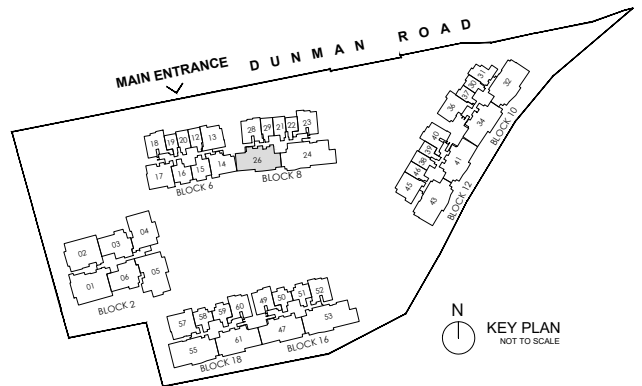


### LEGEND:

F	FRIDGE	WN	WINE CHILLER
W/D	WASHER AND DRYER	DW	DISHWASHER
DB	DISTRIBUTION BOARD	AC	AIR-CONDITIONER
ST	STORE	RC	REINFORCED CONCRETE (EXCLUDED FROM STRATA AREA)
WC	WATER CLOSET	☒	VOID SPACE (EXCLUDED FROM STRATA AREA)
HS	HOUSEHOLD SHELTER		



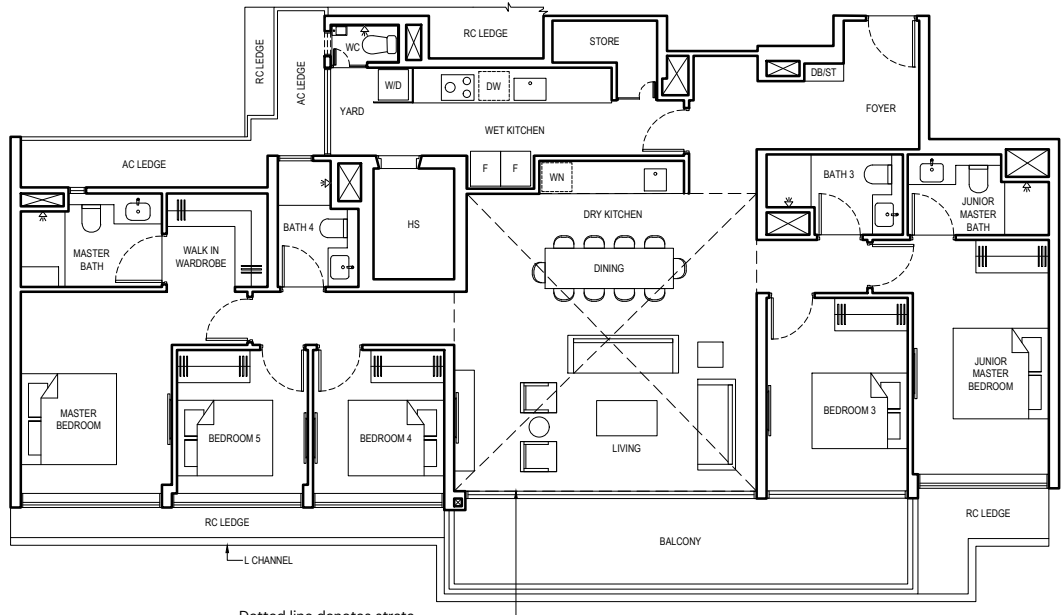
ALL PLANS ARE SUBJECT TO CHANGES BY THE RELEVANT AUTHORITIES.  
 MEASUREMENTS ARE APPROXIMATE ONLY AND SUBJECT TO FINAL SURVEY.  
 INFORMATION ACCURATE AT POINT OF PRINTING.  
 BP NO.: A1716-00003-2022-BP01 DATED 15 MAY 2023



# PENTHOUSE (GRAND)

## TYPE PH-4

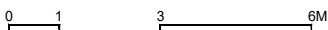
226 SQM/ 2433 SQFT  
 (INCLUSIVE OF 18 SQM BALCONY,  
 9 SQM AC LEDGE & 38 SQM STRATA VOID)  
 BLOCK 16 #18-47  
 BLOCK 18 #18-61 (mirrored)



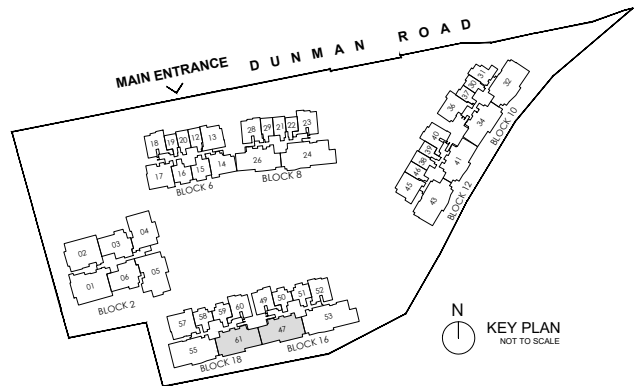
Dotted line denotes strata void complete with bulkhead

### LEGEND:

F	FRIDGE	WN	WINE CHILLER
W/D	WASHER AND DRYER	DW	DISHWASHER
DB	DISTRIBUTION BOARD	AC	AIR-CONDITIONER
ST	STORE	RC	REINFORCED CONCRETE (EXCLUDED FROM STRATA AREA)
WC	WATER CLOSET	☒	VOID SPACE (EXCLUDED FROM STRATA AREA)
HS	HOUSEHOLD SHELTER		



ALL PLANS ARE SUBJECT TO CHANGES BY THE RELEVANT AUTHORITIES.  
 MEASUREMENTS ARE APPROXIMATE ONLY AND SUBJECT TO FINAL SURVEY.  
 INFORMATION ACCURATE AT POINT OF PRINTING.  
 BP NO.: A1716-00003-2022-BP01 DATED 15 MAY 2023

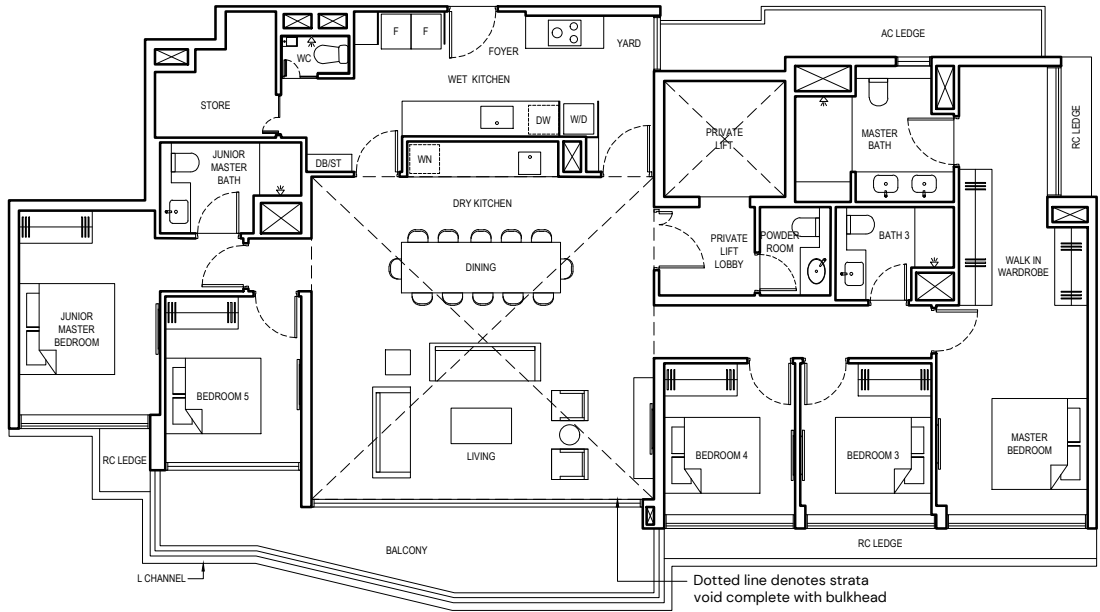


N  
 KEY PLAN  
 NOT TO SCALE

# PENTHOUSE (GRAND)

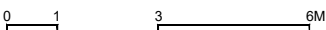
## TYPE PH-5

247 SQM/ 2659 SQFT  
 (INCLUSIVE OF 18 SQM BALCONY, 9 SQM AC LEDGE,  
 3 SQM PRIVATE LIFT LOBBY & 46 SQM STRATA VOID)  
 BLOCK 10 #18-32  
 BLOCK 12 #18-43 (mirrored)

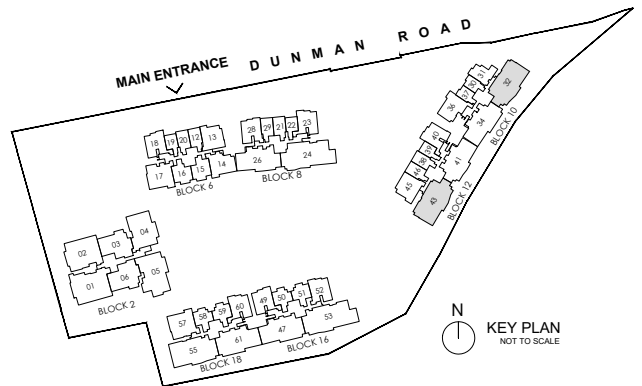


### LEGEND:

F	FRIDGE	WN	WINE CHILLER
W/D	WASHER AND DRYER	DW	DISHWASHER
DB	DISTRIBUTION BOARD	AC	AIR-CONDITIONER
ST	STORE	RC	REINFORCED CONCRETE (EXCLUDED FROM STRATA AREA)
WC	WATER CLOSET	☒	VOID SPACE (EXCLUDED FROM STRATA AREA)



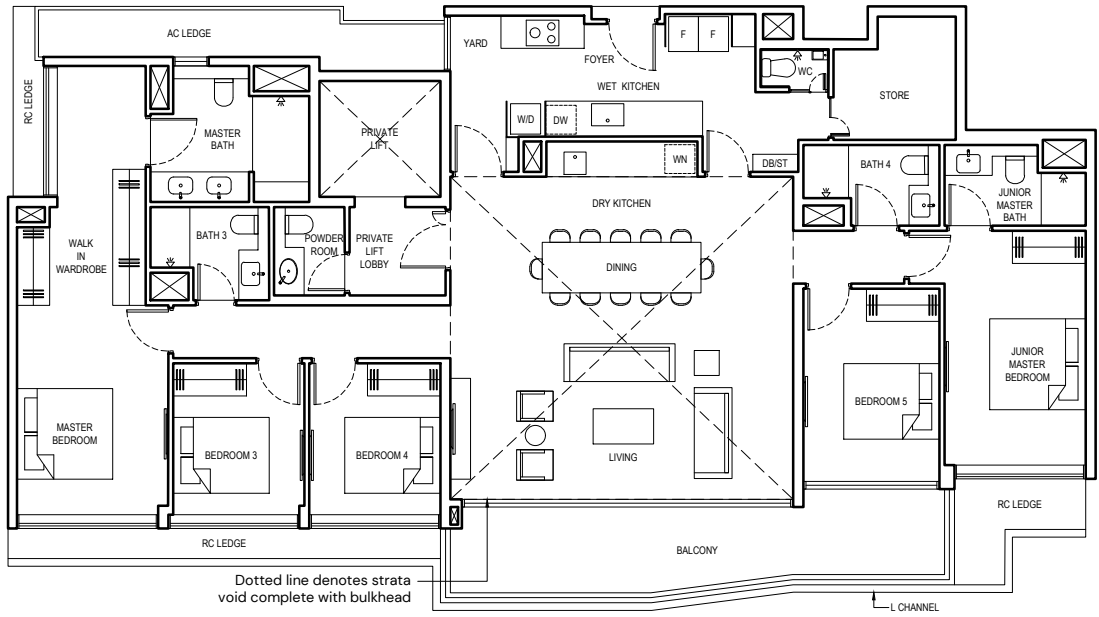
ALL PLANS ARE SUBJECT TO CHANGES BY THE RELEVANT AUTHORITIES.  
 MEASUREMENTS ARE APPROXIMATE ONLY AND SUBJECT TO FINAL SURVEY.  
 INFORMATION ACCURATE AT POINT OF PRINTING.  
 BP NO.: A1716-00003-2022-BP01 DATED 15 MAY 2023



# PENTHOUSE (GRAND)

## TYPE PH-6

256 SQM/ 2756 SQFT  
 (INCLUSIVE OF 19 SQM BALCONY, 9 SQM AC LEDGE,  
 3 SQM PRIVATE LIFT LOBBY & 46 SQM STRATA VOID)  
 BLOCK 18 #18-55

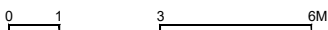


Dotted line denotes strata void complete with bulkhead

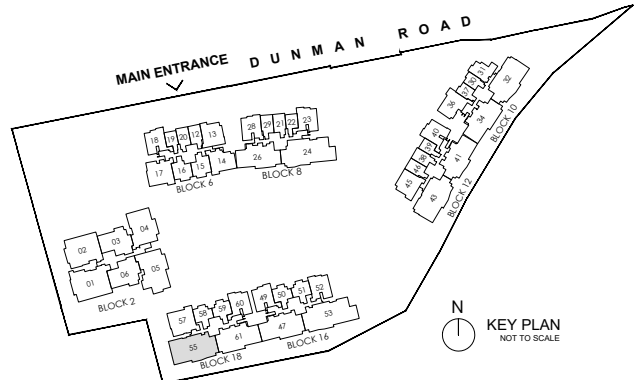
L CHANNEL

### LEGEND:

F	FRIDGE	WN	WINE CHILLER
W/D	WASHER AND DRYER	DW	DISHWASHER
DB	DISTRIBUTION BOARD	AC	AIR-CONDITIONER
ST	STORE	RC	REINFORCED CONCRETE (EXCLUDED FROM STRATA AREA)
WC	WATER CLOSET	☒	VOID SPACE (EXCLUDED FROM STRATA AREA)



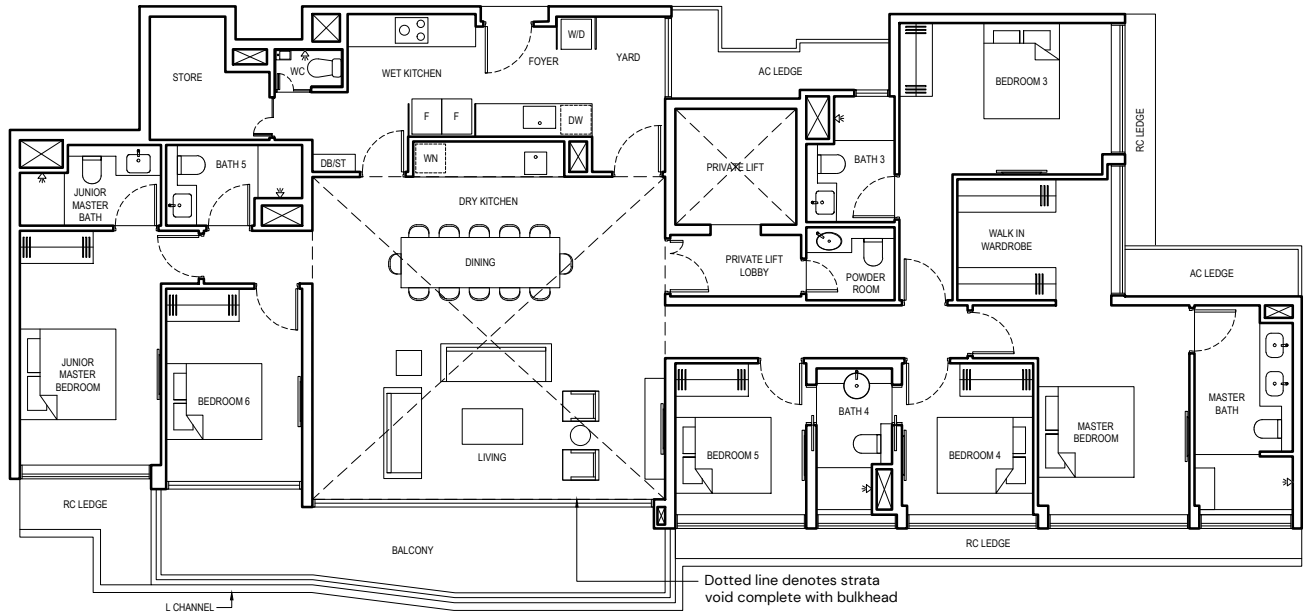
ALL PLANS ARE SUBJECT TO CHANGES BY THE RELEVANT AUTHORITIES.  
 MEASUREMENTS ARE APPROXIMATE ONLY AND SUBJECT TO FINAL SURVEY.  
 INFORMATION ACCURATE AT POINT OF PRINTING.  
 BP NO.: A1716-00003-2022-BP01 DATED 15 MAY 2023



# PENTHOUSE (GRAND)

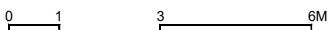
## TYPE PH-7

284 SQM/ 3057 SQFT  
 (INCLUSIVE OF 19 SQM BALCONY, 9 SQM AC LEDGE,  
 4 SQM PRIVATE LIFT LOBBY & 48 SQM STRATA VOID)  
 BLOCK 16 #18-53

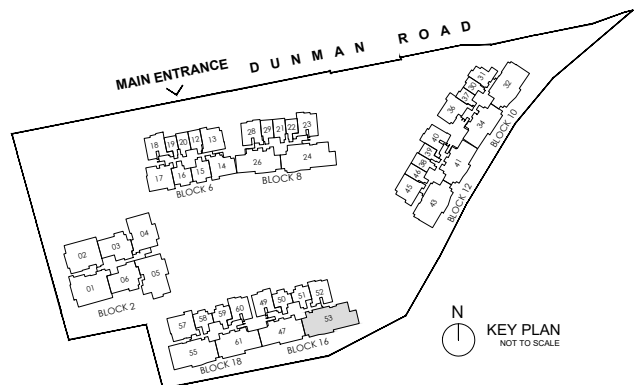


### LEGEND:

- |     |                    |    |   |
|-----|--------------------|----|---|
| F   | FRIDGE             | WN | WINE CHILLER                                    |
| W/D | WASHER AND DRYER   | DW | DISHWASHER                                      |
| DB  | DISTRIBUTION BOARD | AC | AIR-CONDITIONER                                 |
| ST  | STORE              | RC | REINFORCED CONCRETE (EXCLUDED FROM STRATA AREA) |
| WC  | WATER CLOSET       | ⊠  | VOID SPACE (EXCLUDED FROM STRATA AREA)          |



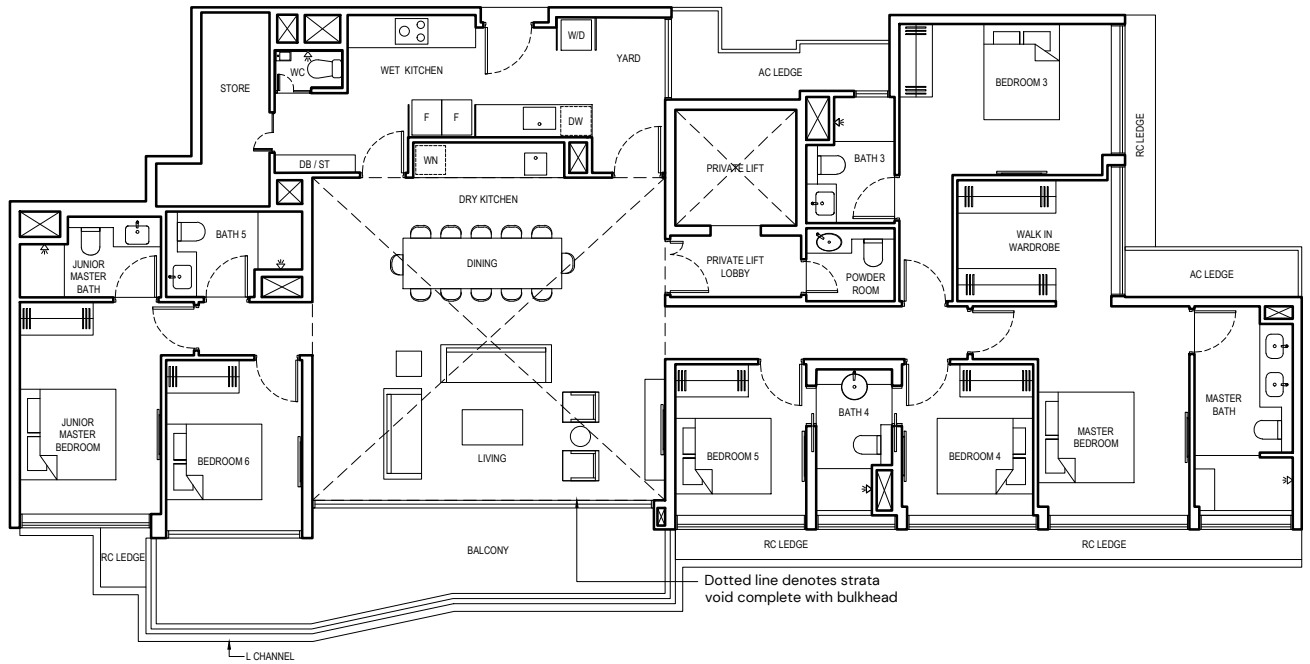
ALL PLANS ARE SUBJECT TO CHANGES BY THE RELEVANT AUTHORITIES.  
 MEASUREMENTS ARE APPROXIMATE ONLY AND SUBJECT TO FINAL SURVEY.  
 INFORMATION ACCURATE AT POINT OF PRINTING.  
 BP NO.: A1716-00003-2022-BP01 DATED 15 MAY 2023



# PENTHOUSE (GRAND)

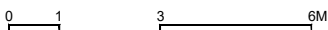
## TYPE PH-8

285 SQM/ 3068 SQFT  
 (INCLUSIVE OF 18 SQM BALCONY, 9 SQM AC LEDGE,  
 4 SQM PRIVATE LIFT LOBBY & 48 SQM STRATA VOID)  
 BLOCK 8 #18-24



### LEGEND:

- |     |                    |    |   |
|-----|--------------------|----|---|
| F   | FRIDGE             | WN | WINE CHILLER                                    |
| W/D | WASHER AND DRYER   | DW | DISHWASHER                                      |
| DB  | DISTRIBUTION BOARD | AC | AIR-CONDITIONER                                 |
| ST  | STORE              | RC | REINFORCED CONCRETE (EXCLUDED FROM STRATA AREA) |
| WC  | WATER CLOSET       | ⊠  | VOID SPACE (EXCLUDED FROM STRATA AREA)          |



ALL PLANS ARE SUBJECT TO CHANGES BY THE RELEVANT AUTHORITIES.  
 MEASUREMENTS ARE APPROXIMATE ONLY AND SUBJECT TO FINAL SURVEY.  
 INFORMATION ACCURATE AT POINT OF PRINTING.  
 BP NO.: A1716-00003-2022-BP01 DATED 15 MAY 2023

